

CVDFP Co-Chair Report

Dr. Jim Broere and Dr. Trudy Woudstra

The 2014/15 year proved to be exciting and productive for the Cowichan Valley Division of Family Practice. As we matured as a division, many of our initiatives matured as well. As board co-chairs, we both attended the provincial division round table meeting in May and were struck by how far we have come over the last 4 years. Many Divisions are still in their infancy and as new groups have come on line they have frequently looked to the CVDFP for advice. At the meetings it became clear that the spirit of collaboration with the various stakeholders (Ministry of Health, Doctors of BC, Health Authorities and Divisions) is alive and well.

Over the last year we have met our goal of attaching 3600 people under the “GP for Me” banner. We in fact have attached around 4500 patients and counting. To continue to move forward with our GP for Me program, the division has established a central intake phone resource (1-866-460-3649) to help connect truly unattached patients to a family physician. The future of funding for the GP for Me initiative is currently being reviewed but we are well positioned to continue our work despite monetary uncertainty.



Through the hard work of division staff and maternity clinic family physicians we were able to secure further funding for the maternity clinic through Island Health. This financial partnership has helped ensure the continued operation of the maternity clinic. The FPHSP (Doctor of the Day) continues to run smoothly and is a great asset to our hospital. The number of participants remains stable and satisfaction with the program is high. Both of these programs are key in supporting the diversity of important work that GPs provide to our community.

Recruitment efforts continue via quality print advertising and involvement in the interdivisional recruitment committee. Our Locum Coordinator program is also functioning well with feedback being incorporated to improve communication. The Spring Fling and Christmas party organized through the division were well attended and will continue on as feedback about both has been very positive.

The Division has also been active with our specialist colleagues via shared care projects, which has led to improved communication and understanding. We hope to continue this work to help streamline patient care in the Cowichan Valley. A key relationship has been with our partners in mental health in children, youth and adults. We will be rolling out new initiatives in this area in the fall, and will be looking for physician involvement in a variety of ways. Work to strengthen relationships and communications with our local First Nations communities also continues to develop positively.

Our most recent endeavour was the hiring of a patient navigator, Rob Calnan. Rob is well known to division members for his work as past Site Manager at CDH. His experience will be invaluable in helping family physicians and their patients access information or services. Initially Rob will focus on supporting the ER Familiar Faces program – helping family physicians create care plans to reduce unnecessary ER visits and to improve care to those who do utilize ER services several times a year. We hope to broaden his scope in the future. We are eager to have input from our members as to how the role of navigator will best serve our patients.

The division is in the process of launching its updated physician survey and we’re hoping uptake will be substantial. The information we obtain from the survey will be the cornerstone of planning the future priorities of our division, so please participate. Two coaches are available to help with the survey and will be contacting division members over the coming months to facilitate completion of the survey.



A big part of the work of our division has been the building of relationships with community partners. These connections are now strong and come together at our Collaborative Services Committee, with Island Health, CVDFP, First Nations Health Authority, Cowichan District Hospital Foundation, Our Cowichan Health Network and specialist physicians, to name a few, all represented. Working with our partners has the potential to make inroads on the social determinants of health as we look to take a collective impact approach.

This upcoming year will see the launch of the residential care initiative as we work towards integrated care of the frail elderly. Due to the well established relationships with our community partners and the strength of our division, Cowichan has been identified as a prototype community for innovative approaches to care of the elderly. We are one of only ten communities in the province. A working group looking at the care of the frail elderly will be struck in the fall. CVDFP is looking to its members to participate in this important initiative so please consider putting your name forward to sit at this table.

In closing we would like to thank the members of our board for their hard work and dedication to the CVDFP. Also, a big thank you to division staff Valerie Nicol, Jennifer Berg and Tiffany Littmann. This trio keeps our Division on track and moving forward; we would be lost without them. As our work moves forward and grows we can’t continue to rely on the same individuals over and over, so please consider getting active in your division – many hands makes for a lighter load for all.

Treasurer’s Report

Dr. Jeinien Burger, Treasurer



On behalf of the CVDFP Board or Directors, I am pleased to present The Cowichan Valley Division of Family Practice Society’s audited financial statements for the fiscal year ending March 31, 2015.

KPMG LLP Chartered Accountants have examined the financial statements, comprised of the statement of financial position, statement of operations, changes in fund balances and cash flows. In their opinion, the financial statements present fairly, in all material respects, the financial position of the Division as at March 31, 2015, in accordance with Canadian generally accepted accounting principles.

Statement of Financial Position as at March 31, 2015

- Total cash assets held were \$1,116,053
- Infrastructure ended the fiscal year with \$24,959 in deferred contributions. These funds will be carried over into the 2015/2016 fiscal year.
- The March 31, 2015 balance of funds remaining from Attachment funding was \$131,626. This brings the total “Due to Doctors of BC” payable account to \$961,672. Also under Attachment, \$368 remained in deferred for Aboriginal Success by Six, \$29,846 for IPSI and \$30,061 remained from Shared Care.

Statement of Operations to March 31, 2015

- The 2015 fiscal year ended with an excess of revenues over expense of \$7,366, with a majority of this excess in Attachment. The excess represents interest earned on held funds, bringing to fund balance total to \$9,940.
- Maternity Clinic operating costs for the year were \$75,000 compared to \$174,360 in the previous year. The decrease was due to the transition of the nursing wage to Island Health.
- Physician meeting costs for the fiscal year 2015 were \$96,635, compared to \$130,707 in the previous fiscal. There was a reduction in the total amount of meetings, and of the number of attendees.
- General and administration costs for the year were \$372,013 compared to \$363,827 in the previous fiscal. There was a slight increase due to infrastructure spending on information technology and office supplies.

I would like to thank the board and general membership for the opportunity to serve as the CVDFP Treasurer. I would also like to thank the division staff for their continued hard work, support and commitment to the financial management of the division’s resources.

YOUR DIVISION TEAM

Board of Directors

Dr. Jim Broere, *Co-Chair*
 Dr. Trudy Woudstra, *Co-Chair*
 Dr. Jeinien Burger, *Treasurer*
 Dr. Tom Rimmer, *Past Chair*
 Dr. Bryan Bass
 Dr. Juliette Eberhard
 Dr. J-M Wilson

Staff

Valerie Nicol - *Executive Director*
 Jennifer Berg - *Financial Administrator*
 Tiffany Littmann - *Executive Administrator*
 Alison Sherwood - *Administrative Assistant*
 Krystal Poirier - *Locum Coordinator*

A warm welcome to Alison Sherwood, who joins the CVDFP team, replacing Tracey Powell as Administrative Assistant. Thank you to Tracey for all her hard work and commitment to the division over the years.



Executive Director’s Summary Report

Valerie Nicol

In 2014-15, our fifth year of operation, the Cowichan Valley Division of Family Practice reached several key milestones:



- We grew to more than 100 members
- We surpassed our Patient Attachment goal of 3600 patients ahead of schedule, in October 2014 (see table below)
- We created a sustainable future for the Cowichan Maternity Clinic by expanding our partnership with Island Health to include staffing
- We successfully recruited new physicians to Cowichan, thereby ending the shortage in Lake Cowichan and supporting our Patient Attachment goals
- In addition to supporting the successful completion of our first two Shared Care Projects: Palliative Care and GP-Specialist Collaboration, the CVDFP partnered on the launch of a Cowichan Child and Youth Mental Health Collaborative Local Action Team
- The CVDFP became a partner and key stakeholder in several community-driven Collective Impact initiatives focused on improving health and well-being in Cowichan (Mental Health and Substance Use, Safer Pregnancies and Seniors Health)
- We announced plans for a public toll-free number as our sustainable patient attachment strategy (1-866-460-3649)
- We announced plans for our GP for Me final evaluation strategy: a refresh of our 2011 Physician Self-Assessment survey to indicate most significant changes; to determine our future Physician Recruitment needs; and to begin re-connecting with our poorly attached patient population

Interested in receiving a full copy of the CVDFP 2014-15 program data report, or the 2015-16 strategic plan? Contact Division staff at tlittmann@cvdfp.ca.

CVDFP Patient Attachment Totals
To March 31-2015

PRIMARY PROGRAMS	To Mar 31-2013	2013-14	2014-15	Cumulative totals
Maternity Clinic	230	84	130	444
FPHSP ¹	21	42	42	105
Extrapolated data for missing 10 months (Jun 2012-Mar 2013) ²	35	n/a	n/a	35
ER Referral Program	n/a	n/a	16	16
Locum Program ³	421	0	0	421
Recruitment ⁴	0	0	80	80
Sub-total	707	126	268	1101
GP SUPPORTS				
Lake Cowichan closure	500	n/a	n/a	500
Ind. Clinic submissions ⁵	n/a	1338	1543	2881
Sub-total	500	1338	1543	3381
TOTALS	1207	1464	1811	4482

¹ First measure includes only October 2011 to May 2012:
Patient/month average, Oct 2011-May 2012: 3.5
Patient/month average, Apr 2013-Mar 2014: 3.5

² Estimated number of patients attached via FPSHP for Jun 2012-Mar 2013, based on previous monthly averages

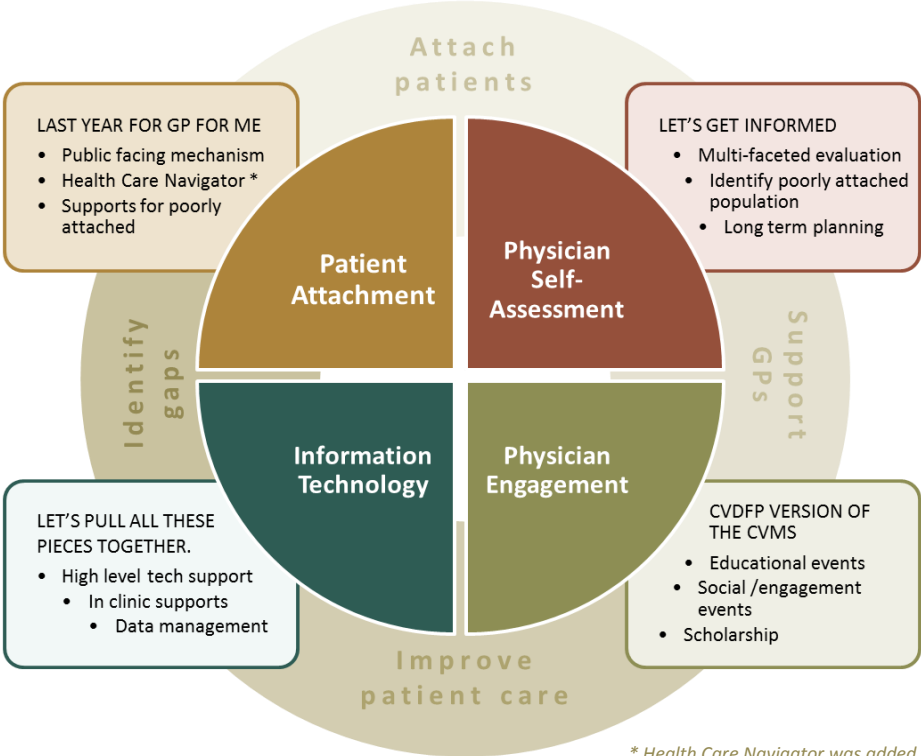
³ Attachment achieved via a locum physician choosing to stay in Cowichan and open a new full service practice

⁴ Achieved via recruitment of 2 new GPs for the Lake Cowichan Community in 2013-14; other net new GPs not included in this tally as they arrived in Cowichan of their own accord

⁵ Data for April 1-2014 to March 31-2015 was collected from 54 GPs in 12 different clinics

Patient attachment goals met, ahead of schedule!

2015-16
CVDFP STRATEGIC PRIORITIES



* Health Care Navigator was added following the strategic planning session when resources became available.

Alignment of Priorities

For 2015-16, CVDFP chose to use a broad scope strategy in identifying its priorities in order to develop a more comprehensive, integrated and coordinated plan, intended to achieve both individual and broader goals.

For example:

