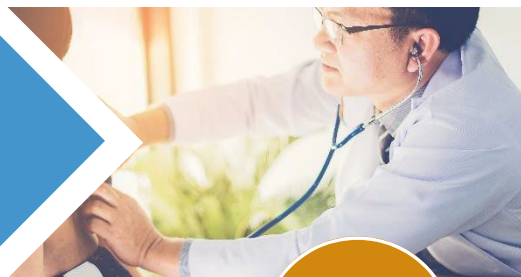


South Island Division of Family Practice

# Tanis Wynn



*Encounter, Attachment and Shift Reporting EMR Orientation Guides  
– Med Access and Oscar EMR*

A question I hear a lot lately within our medical community is “Am I reporting my encounters properly?” Anytime processes change it can be difficult to know if you are working from the latest information and it is always nice to be reassured that we have programmed our EMR’s properly in advance.

I am happy to share with you that The Doctors Technology Office (DTO), Practice Support Program (PSP) staff with the support of Med Access and Oscar EMR have created some general guides to ensure your [Med Access](#) and [Oscar EMR](#) users can correctly format the Encounter, Attachment and Shift reporting. Most EMR vendors have pre-programmed the encounter codes directly into their EMR’s for you.

I have included links to the documents for you and your staff to review and I hope that you will find it helpful. EMR vendors are happy to assist with any questions you may be having, and I encourage you to contact your vendor support line directly if you run into any difficulties during your EMR formatting.

May 2022

Have a question?  
Contact  
[Tanis.Wynn@sidfp.com](mailto:Tanis.Wynn@sidfp.com)

## Tanis Wynn



Tanis’ role as an In-Practice Consultant is to assess medical system clinics to identify system issues impacting Family Practice, and to support opportunities to improve best practices. Tanis will work alongside you and your clinic staff to develop new strategies and will assist with practice transitions. Tanis acts as a contact for newly recruited Family Physicians and participates in the Resident Engagement Working Group. She also provides professional development and facilitation to MOAs.

Tanis’ background as a Practice Manager and consultant allows for fluent conversations regarding your practice needs and supports.

Have a question or want more information? Please contact Tanis at [Tanis.Wynn@sidfp.com](mailto:Tanis.Wynn@sidfp.com)