

PORT ALBERNI



PRIMARY CARE NETWORK

MOBILE HEALTHCARE UNIT

(BASED AT THE COMMUNITY HEALTH CENTRE)

why?

Transportation barriers to accessing care for urban, rural and remote populations are widespread. There is significant need to deliver mobile primary care services to these patients.

This service strategy seeks to support our priority populations including urban Indigenous and non-Indigenous, rural and remote, as well as those who are street-entrenched.

Aligns with PCN Attributes:

Same Day Access,
Culturally Safe Care,
Extended Hours,
Comprehensive Care,
Coordinated Care and
Clear Communication.

RESOURCES NOTIONALLY APPROVED:

- 1 Physician
- 1 Registered Nurse
- 2 Social Workers

Attachment Target: 1150

PLANNED DATE: Year 3, 2025

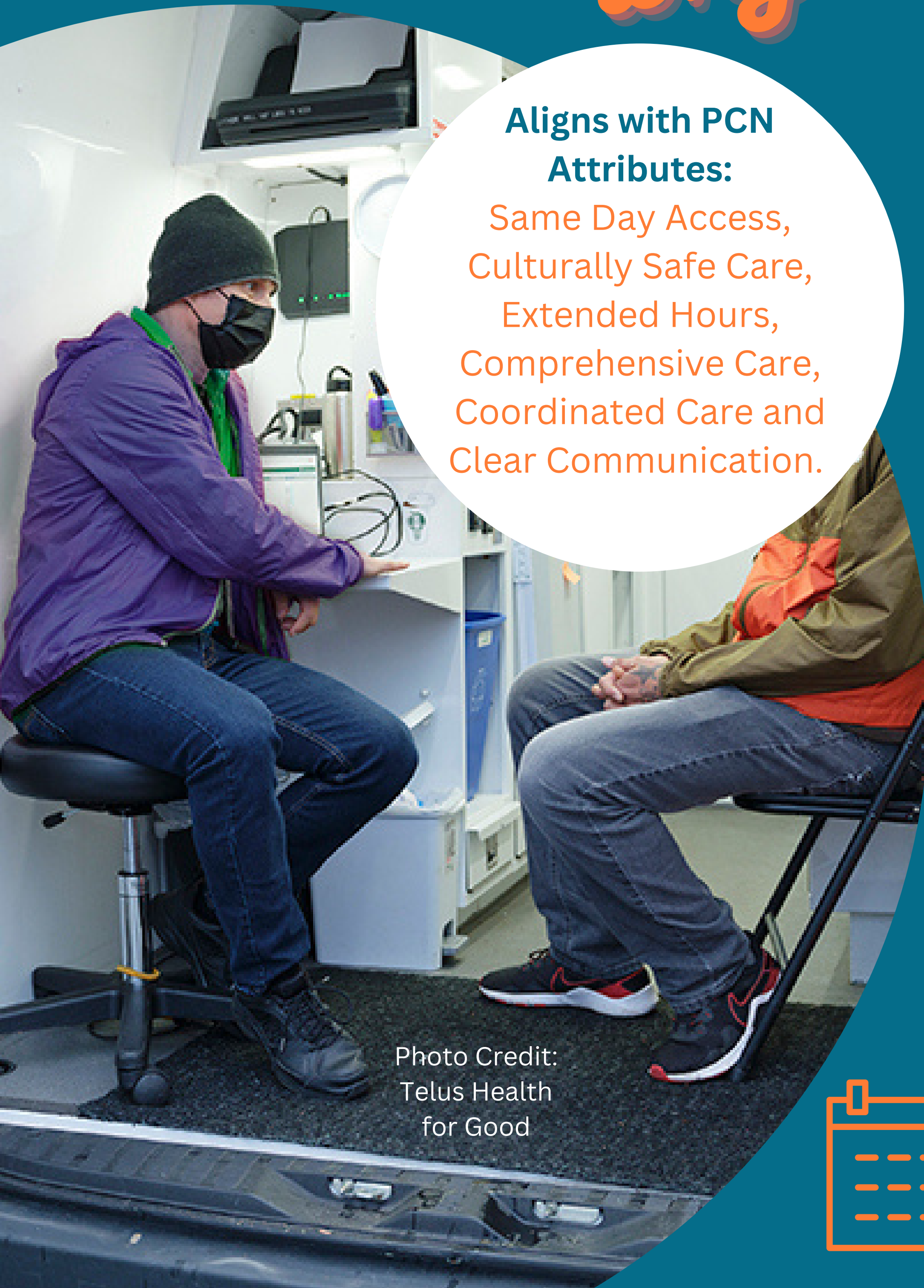


Photo Credit: Telus Health for Good