

ANNUAL GENERAL MEETING 2021



Hermann Grid



Mission

Division of Family Practice

A GPSC initiative

MISSION STATEMENT



DoFP
MISSION

Promoting sustainable primary health care through programs which address the health care issues of our community and physicians

CONTENTS

Chair's Report	3	Allied Health Reports	11
Executive Director's Report	4	Project Manager's Report	12
Treasurer's Report	5	Practice Support Program's Report	13
Financial Statement	5	Community Health & Social Innovation Hub (CHASI)	14
Maternity Clinic Report	6	Mission Youth Clinic	14
Primary Care Clinic Report	6	Board of Directors and Advisory Committee	15
Primary Care Network Manager's Report	7		

Chair's Report

This past year has been busy for all of us. As the COVID19 pandemic required less resources and focus, we regrouped and are renewing our efforts to support and advocate community primary care in Mission.

Our Division continued with our Patient Medical Home and Primary Care Network Initiatives. We hired a Registered Nurse, 2 Social Workers, and a Clinical Counsellor. Both Nurse Practitioner Binh Nguyen and Dr. Gurpreet Khatra joined our community in March 2022, Dr. Tarun Soni joined May 2022, and Dr. Kanika Rai joined in September 2022. We are very fortunate to have them! We continue to attach patients through the Primary Care Clinic attachment mechanism. We have attached 3,126 patients to primary care providers in our community.

We are all saddened to announce the closing of the Mission Maternity Clinic, it was an excellent service to our community over the past 5 years, supporting moms and delivering 550 babies. In the past fiscal year, 114 babies were born through the clinic and 15 previously unattached moms and babies were attached to a primary care provider after discharge. We thank Dr. Jeff Kornelsen, Dr. Esther Warkentin, Dr. Jaspreet Lidder and Dr. Chelsea Wiksyk for their service. We wish them all the best in their new clinical endeavors. We also regretfully said goodbye to Dr. Esther Warkentin as she moved away in July. Her dedication to the patients from The Primary Care Clinic and Maternity Clinic will be greatly missed.

All of our PCN Working Groups are ongoing. We focused on Mental Health & Substance Use, Indigenous Working Group; Operations, HR, Legal & Privacy, Monitoring and Evaluations, and the Patient Medical Home.

All of this work would not be possible without our excellent support staff, our dedicated Advisory Committee, our Board, and our amazing Physician members. I welcome you to become involved in any of our activities, working groups, initiatives or on the advisory committee. I also welcome you to visit the Division's office to meet our wonderful staff, our Executive Director, Shona Brown; our MOAs and Administrative Assistants, Kimberly Bergen, and Matt Kornelsen; our Project Manager, Cristina Rouillier; our bookkeeper, Paul Burns; our PCN Manager, Jen Cook. We also have our PCN allied health hosted in the Division offices. Our registered nurse Sara Ruiz, our social workers, Tanya Shelley, and Marisa Kerr; our clinical counsellor Bill Holloway, and our Community Resource Navigator Sara Hoffmann. I look forward to continuing our efforts to improve primary care in our community in the coming year.

Respectfully submitted,
Dr. Carol Pomeroy



The clinicians and staff of the Mission Division of Family Practice acknowledges that we live and work on the unceded, traditional, and ancestral territories of the Stó:lō People, particularly the Sq'ewlets, Matsqui, Kwantlen and Leq'á:mel Peoples.

Executive Director's Report

2021 has been another relentless year of COVID -19 and its variants, seeing wave after wave. Despite the rise and fall of the waves, you, our members continued to work tirelessly to ensure patient care continued with little to no disruption. Regardless of the extreme challenges COVID-19 presented, the Mission Division was able to move forward with many projects and programs. Currently the Primary Care Networks (PCN) is the largest underway.

Lunch and learn or the town hall series started primarily to give updates on what was happening around COVID-19, but we continued it due to popular demand and the need and willingness to come together as a community. Cristina has secured several speakers for the fall. This will remain virtual as the need to keep everyone safe and informed is still present.

I want to acknowledge the work being done with our partners, FHA, Mission Healthy Community Council (MHCC), and the City of Mission. Our partners shared the first batches of covid rapid tests with us as soon as they heard Family Physician offices had none. There is nothing better then knowing our partners have our backs. This is how we protect and lift each other up. These partners are also very involved in our PCN work, you can see the full PCN report along with other projects and program updates within this report.

I was ecstatic to see new names on our membership list, with more still coming to Mission. Recruitment is getting tougher and tougher. We can no longer hope to attach everyone to one professional, but perhaps we can attach each patient to our community of care professionals, to our "One Canoe."

Critical to the success of PCNs as well as all our programs, is participation of our members: without family physicians and nurse practitioners, there are no multi-disciplinary primary care networks. So, thank you for your willingness to do things differently. I would like to thank our board of directors and our advisory committee. It is through your leadership and support that we are making a difference in our community. To all our physicians who participate in the hiring of allied health partners or sit on committees to make things even better for patients in Mission, thank you. We know your time is valuable, but we also value your input.

I would also like to thank the small but mighty division team who are at the ready to go above and beyond expectations to ensure members are being supported through this crazy journey: the Division is most fortunate to have such a dedicated team. Kimberly and Matt, thank you for the compassion and care you show for our primary care patients and our maternity families. Cristina our project manager extraordinaire, we appreciate your creativity and your make it happen attitude, we are so lucky to have you on our team. Jen our PCN manager, thank you for being so willing to ride the unknown waves of PCN and partnerships, while keeping the needs of our family physicians at the top of the list. The water has been very rough at times, but your constant paddling will get us there. Paul our bookkeeper, #amazing# thank you for patiently getting us through another year and year-end audit. Could not do this work without you. #grateful#

As a primary care community, we have pulled together and risen to one of the greatest professional challenges of a lifetime! We are persistent, resilient, and collaborative. We will paddle through adversity to get the job done.

Stay safe. Respectfully submitted,

Shona Brown
Executive Director



Welcome to Mission!

On behalf of all the members and the staff, we would like to extend our warmest welcome and good wishes!

Dr. Tarun Soni

NP Binh Nguyen

Dr. Gurpreet Khatra

NP Chenyi Zhu

Dr. Kanika Rai

Treasurer's Report

On behalf of the board, I am pleased to present the Mission Division of Family Practice's audited financial statements for the fiscal year ending March 31st, 2022. Our accountants, Loewen Kruse Chartered Accountants examined our financial statements in detail in May of 2022 and were satisfied that we are in compliance with the Canadian accounting practices.

The 2021/2022 fiscal year continued to be a very busy year for the Division:

The infrastructure funding and the PCN funding has remained stable and the same as the previous years.

The Primary Care Network initiatives have formed a significant part of the Division's work, and, at present, we have continued our role in the Mission Division's Primary Care Clinic, the Mission Maternity Clinic, the Mission Youth Clinic, the Patient Medical Program, and the Residential Care Program. A new funded program we will be working on is the Emergency Management Program - designed to ensure that clinics are ready should a disaster strike.

The Mission Division continues to have excellent support staff to ensure that the initiatives continue to be run effectively. Our staff include Shona Brown, our Executive Director; Paul Burns, our bookkeeper; Cristina Rouillier, our Project Manager, Jen Cook our PCN Manager, Matthew Kornelsen and Kimberly Bergen as our MOAs.

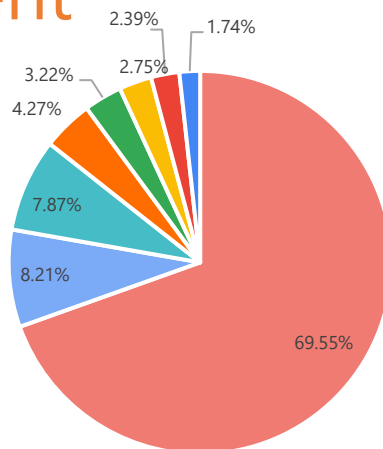


I would like to thank all the staff for all their ongoing hard work and commitment to the financial management of the Division's resources, especially in what has been an incredibly difficult twelve months with the pandemic.

Respectfully submitted, Dr. Harjinder Dau

Financial Statement Expense Summary 2021-2022

Human Resources	734,427
Residential Care Physician	86,750
Board & Committees	83,147
Supplies & Equipment	45,068
Facilities	33,954
Administration	29,044
Night Doctor	25,252
Membership	18,397



Respectfully submitted, Paul Burns, Bookkeeper

Mission Maternity Clinic

The maternity clinic continued to be busy with expectant mothers in the clinic and births at Abbotsford hospital. Our patients were well supported throughout their pregnancy and postpartum. By Dr. Jeff Kornelsen, Dr. Esther Warkentin, Dr. Chelsea Wiksyk and Dr. Jaspreet Liddar. Thank you again to the physicians who continued to attach our mom and baby dyads upon discharge!

In March, after 5 years of operating, our maternity physicians made the very difficult decision to close the maternity clinic by the end of the year. This was due to the physician supply issues as they changed career trajectories, relocated, and due to the inability to recruitment other physicians. We are very thankful for all your referrals and support over the past 5 years!



Pathways Medical Care Directory has recently launched a new online maternity care directory that allows patients to find maternity care providers in their local communities. Help your patients find a provider to care for them during their pregnancy & birth.



Babies born year to date through the maternity clinic (2021 fiscal year): 114

Repeat patients: 23

Attached Mom/ Baby Dyads (2021 fiscal year): 15

Thank you Maternity Physicians

Dr. Jeff Kornelsen

Dr. Esther Warkentin

Dr. Chelsea Wiksyk

Dr. Jaspreet Liddar

Primary Care Clinic

The Primary Care Clinic continued to provide approx. 340 patients comprehensive medical care over the past year. We had the privilege of having Dr. Carol Pomeroy, Dr. James Dueckman and Dr. Esther Warkentin provide weekly shifts to the patients requiring care.

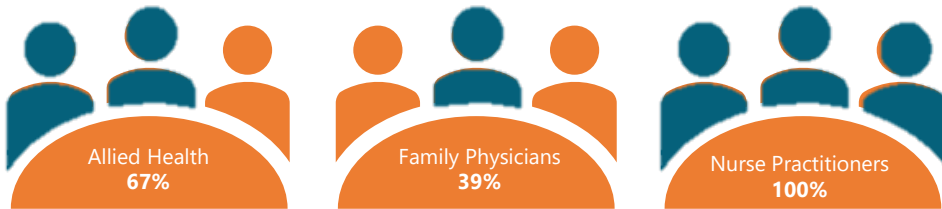
We were sad to lose NP Nunu Jaganath in November to the Chilliwack PCN, and Dr. Esther Warkentin made the announcement she would be moving up to Prince George in the summer. With these big changes, fortunately we were able to rapidly attach many of the patients to our new Mission providers.

We look forward to continuing to care for our complex patients in the coming year and continuing our attachments.

Number of Patients Attached To Primary Care Providers Through The PCC Attachment Mechanism: **3,126**
Current Waitlist For A Primary Care Provider: **1,500** families

Primary Care Network Manager's Report

This fiscal year marked the halfway point in PCN implementation. While we were able to successfully reach many key milestones, some major setbacks caused us to pause, pivot and respond dynamically in order to continue to move forward. One of our major accomplishments this year was the growth of our team as we welcomed new allied health, Physicians and Nurse Practitioners. However, the Ministry of health's announcement that they were unable to deliver on their commitment to PBF had a devastating impact on many aspects of implementation. Mission PCN strategies are interconnected and interwoven; the success of one is contingent on all. PBF is the foundation of these strategies, without a solid foundation, Mission will lack the structure required to build the remaining strategies and PCN will remain a visionary goal without the strength to sustain it.



➤ **3,126 Attachments by Year 2** ➤ **Attachment Goal= 11,580** ➤

Year 1 & 2 PCN Team Hires

Jen Cook, PCN Manager
Morgan Ducharme, Administrative Assistant
Tania Shelley, Social Worker
Marisa Kerr, Social Worker
Bill Holloway, MHSU Clinical Counsellor
Sara Hoffmann, Patient Navigator

Sara Ruiz, Registered Nurse in Practice
Katrina Stone, Registered Nurse in Practice
Dr. Laurelyn Juadiong, Physician
Theresa Sabiston, NP
Binh Nguyen, NP
Chenyi Zhu, NP
Roger Young, NP

Year 3 & 4 PCN Team Hires

5.6 Physicians
1 Additional RN in Practice
1 Clinical Pharmacist

1 Cultural Advisor

"I took on a patient from the PCC and realized that many of his issues were to do with social determinants, so I made a referral to the social worker. She was able to help with his mobility needs, get some costs covered and make sure he was receiving appropriate benefits. It was super helpful and saved me a lot of time."

- Physician Interviewee

60%
of the PCN team has been
hired to date



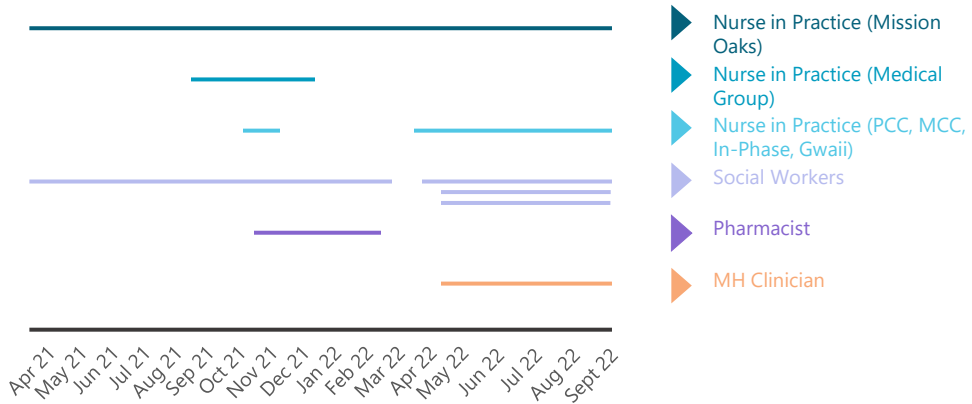
PCN Working Group Discussions:

PMH	<ul style="list-style-type: none"> Pivot from PBF and EMR transitions to focus on solutions to space challenges
Mental Health & Substance Use	<ul style="list-style-type: none"> Working to increase coordination, collaboration and communication across MHSU services at a community level.
Monitoring, Evaluation & Communication	<ul style="list-style-type: none"> Completed mid point evaluation Reviewing patient survey- focus on team-based care
Operations, HR, Legal & Privacy	<ul style="list-style-type: none"> Weekly partnership check ins with FH has minimized the need for this group to meet regularly
Indigenous	<ul style="list-style-type: none"> Partnership building- planning for October 19th event Role of Cultural Advisor Completed patient survey to identify community needs Discussion questions: How do we move beyond attending cultural safety and humility trainings? How do we engage with Indigenous partners in a meaningful, respectful, and on-going way? How do we ensure that programs & policies are meeting the needs of communities? How do we move forward together?

Overall, the strategies that are implemented in the Primary Care Network include:

PCN Strategies	Enhanced Primary Care	PBF	Indigenous Health Services	Outreach for Seniors & Youth	Enhanced MHSU	Enhanced Maternity
About the Strategy	PCC acts as attachment mechanism & provides care for complex patients	Transition to PBF is foundation to all strategies	Improve access to care for Indigenous people	Improve access to primary care services for seniors' & youth	Increase access to mental health services.	Clinic was started to support families locally.
Progress Made to Date	Pivot plan from sustainable funding for PCC to establishing a UPCC	Transition from FFS to PBF stalled	WG has diverse members and strong partnerships	Hired a Patient Navigator with focus on outreach	Seeking strategic alignment at a community level.	Lack of maternity providers caused clinic closure
Next Steps	Secure location for the UPCC	Brought forward concerns in delay to MoH, DoBC, FHA.	Review patient surveys & role of Cultural Advisor	Plan for the mobile van to be operational in fall 2022.	Strengthen ability collaborate at the level	Discussion for ideas on next steps held in August

A challenge has been turnover in allied health and nursing roles



Achievements

- Integration of health and social planning through PCN involvement with the Community Wellness Strategy
- Team-based care coach & PSP to support AH and RN integration
- Exit interviews have been valuable, to learn from people leaving what to do better next time
- Building relationships within the Indigenous strategy to determine how to best meet the needs

Challenges

- Ministry of Health not supporting transition to PBF model
- Physician recruitment and retention
- Hiring and retaining allied health and nursing roles
- Lack of clinic space
- Delays in securing space for the UPCC continues to impact the sustainability of the PCC

Some of the key partnership highlights over the last year include:

- Mission Healthy Community Council: Resurgence of the MHCC in Oct 2022. The City of Mission took the lead, in partnership with PCN. MHCC is driving the Community Wellness Strategy. This will be a joint health & social strategic plan that will incorporate all the current community initiatives and align with the PCN Service Plan.
- Mobile Health Van: The City obtained a grant to purchase a mobile health van. Due to extreme supply shortages and shipping delays, we are still exploring the best option to purchase a van as quickly as possible. The goal was to have the van purchased by the end of the fiscal year.

PCN is a collaborative partnership. I would like to take this opportunity to thank the following parties:

PCN Steering Committee

Mission Division of Family Practice Board & Advisory	Fraser Health Clinical Operations
Mission Division of Family Practice Staff	Fraser Health Public Health
BC Ministry of Children & Family Development	Fraser Health MHSU
City of Mission	Patient Partners

Collaborative Services Committee

Mission Division of Family Practice Board & Advisory	Fraser Health Executive Director, ARH/ MMH & Abbotsford/ Mission Community Health Services ED
Mission Division of Family Practice Staff	
Mission Senior Activity Centre	Fraser Health Public Health
Mission Community Services Society	Fraser Health Clinical Operations
Doctors of BC	Fraser Health Community Health Services
Fraser Salish First Nations Health Authority	Fraser Health MHSU

Opportunities for Engagement

Who?	What?	Where?	When?	Why?
Seeking Member Participation	Monitoring/ Evaluation & Communication WG	Zoom	Occurs every 3 rd Wednesday of every 2 nd month from 9.30-10.30	Opportunity for Engagement
	PSP Patient Journey Mapping Discussion on TBC	Division Office	TBD	
	Indigenous WG	Zoom	Occurs every 4 th Wednesday of every month from 9.30- 10.30	
	Indigenous Cultural Safety in Primary Care Knowledge	Zoom	Sept. 19 from 5.00-8.00	
	Indigenous WG Retreat	Xá:ytem Longhouse Interpretive Centre	Oct. 19 from 10.00-4.00	

If you are interested, please do not hesitate to reach out jcook@missiondivision.ca, sessions available for member participation.

Respectfully submitted,
Jen Cook, PCN Manager



Allied Health Reports

In May 2022 I joined the Division in a temporary role as Patient Navigator. The plan is for the role to maintain the same scope as Patient Navigator when it transitions into our 3rd PCN SW permanent position. I have been attending monthly community meetings with the Mission Outreach Support Team (MOST) and Mission Active Support Team (MAST). Making community connections strengthens the relationship with other service providers, enhances communication, and promotes continuity of care in the community. I receive referrals directly from the pooled SW referrals on Pathways and I will be supporting patients on site at both the Boswyk Senior's Centre as well as the youth clinic at Fraserview in the fall. Respectfully submitted, Sara Hoffmann, BSW She / her/ hers



I can help patients who are...	What can I do to help?
<ul style="list-style-type: none"> Seniors and youth Unattached Overwhelmed with accessing services Needing more than a phone number/website Falling through the cracks 	<ul style="list-style-type: none"> Sign up unattached patients on FETCH Complete application forms Connect patients to community resources Walk patients through online resources Liaise with FPs, NPs, PCN AH & service providers Support with resource navigation Offer outreach/home visits

Since Tania Shelley and Marisa Kerr started employment with the PCN (May 2022), they have received 83 social work referrals from 19 separate medical practitioners both NP and FPs.

Reasons for referral include:

- | | | |
|--------------------------|----------------------------------|---------------------------------|
| • Finances | • Legal aid | • Medical assistive devices |
| • Mental health services | • Transportation | • Grief |
| • Housing | • Seniors services | • Advanced care planning |
| • Addiction | • First Nations health resources | • Chronic Disease management |
| • Taxes | • Food security | • Collaboration with acute care |
| • Maternal health | • Parenting support | |

There has been SW integration services into four of Mission PCN Clinics.

Bill Holloway, the PCN Clinical Counsellor, started with the Mission PCN in May 2022. Since his start date, he has received 73 referrals (12 closed/ 61 open). The referrals are being sent by 11 separate medical practitioners.

Reasons for referrals include:

- | | |
|------------------------|----------------|
| • Depression & Anxiety | • Trauma |
| • Stress | • Grief & Loss |
| • Relationships | • Chronic Pain |

The Mission PCN currently accepts referrals via Pathways Referral Tracker. If you wish to learn more about Pathways, please connect with Cristina Rouillier (crouillier@missiondivision.ca).



Project Manager's Report

I would like to start by saying that I am very thankful to work alongside such incredible individuals who helped make a difference here in our community.

Shared Care: The mandate of this collaborative committee is to support Family and Specialist Physicians to improve the coordination of care from primary to specialist services. At this time, we have received funding for the Maternity Spread Network initiative. With the announcement of the closure of the Maternity Clinic, we had to shift our efforts to support both the Primary Care Providers and patients in community. Another project that is in development focuses on Chronic Pain. We are engaging with our counterparts in the Fraser East Valley in planning out a project in preparation for an emergency, such as an earthquake or flooding. If you are interested in participating in a Shared Care project, please do not hesitate to reach out (crouillier@missiondivision.ca).

International Medical Graduates: We are excited to welcome our recently onboarded International Medical Graduates (IMG). Dr. Gurpreet Khatra's relocated to work in her home community and joined the Cedar Care Clinic in Spring 2022. Dr. Tarun Soni officially started attaching patients at Gwaii Medical Centre in Spring 2022. Dr. Kanika Rai is set to start her Return of Service in Fall 2022 with Mission Oaks Medical Centre, alongside our newest PRA ROS Dr. Nazia Ahmed starting in Winter 2024. The Clinics, the Mission Division of Family Practice, and the community members are all very excited for these exceptional Physicians to attach patients and to join the TRIM rota.

COVID-19: With yet another COVID-19 year, the Mission Division continues to support any pandemic initiative to protect its residents and healthcare providers. We were thankful to connect with Dr. Matt Chow, former President of Doctors of BC, to enlighten and provide insight on healthcare and how to unstigmatize COVID-19 vaccination in our community.

Lunch N' Learns Spring & Fall 2022: Both the Spring & Fall 2022 Lunch N' Learns have been successful. The attendees and Division staff are all very fortunate to have welcomed a diverse range of presenters. We are continuing to engage with our Primary Care Providers and hope for feedback on which education opportunities they would like to be held in the future.

Pathways Referral Tracker: Mission, alongside other nearby communities, is continually introducing Pathways Referral Tracker to both office staff and care providers, including our PCN Allied Health Providers. Pathways Referral Tracker is a collaborative dashboard where both PCPs and specialist services can track patient referral status.

Staff that have been trained to use Pathways Referral Tracker:

	Sending Referrals	Receiving Referrals
Primary Care Clinic	✓	
Maternity Clinic	✓	✓
Mission Oaks	✓	
The Medical Group	✓	
Gwaii Medical Centre	✓	
In-Phase Care Clinic	✓	✓
PCN Social Workers		✓
PCN Clinical Counsellor		✓
PCN RNiP	✓	✓
PCN Clinical Pharmacist		✓
Patient Navigator		✓

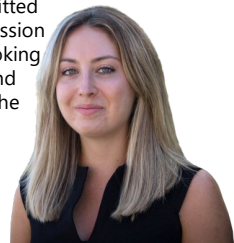
Community Influenza Clinic: Unlike the preceding year, Mission community practices offered their influenza vaccines in each respective clinic. Mission Oaks Medical Clinic and Mission's Primary Care Clinic partnered and served the below number of patients through a collaborative effort.

Date	Total # of Patients
October 21, 2021	63 Patients
October 22, 2021	55 Patients
October 26, 2021	33 Patients
October 27, 2021	38 Patients
Total # of Patients	189 Patients

Writing this report has allowed me to reflect on another amazing year at the Mission Division of Family Practice.

Working in this role has permitted me to express my personal passion about helping others. I am looking forward to the coming year and working together to care for the community.

Respectfully submitted,
Cristina Rouillier
Project Manager



Practice Support Program's Report

The Practice Support Program (PSP) helps doctors and teams build capacity in their practices, enabling them to practice more efficiently, focus more on clinical care and patient relationships, and adopt attributes of the patient medical home in BC.

Our supports help doctors identify, implement, and maintain practice improvements in four measurable areas:

Practice Team Support

Establishing structure, clarifying roles, and teaching necessary skills so GPs and teams can implement practice changes

EMR Optimization

Supporting improved usage of EMRs to inform practice management decisions, facilitate proactive care, and minimize frustrations

Process Management

Improving office workflows, processes and standards, including panel maintenance

Measurement

Using data and metrics to reflect on quality of care and inform improvements where needed.

Looking Back:

PSP's focus this past year was on helping Mission physicians look towards QI projects which were of importance to them. This included proactive Cancer screening, workflow efficiency projects, panel management/review and Team Based Care. A highlight for me was the Patient Journey Mapping and Team Mapping activities which began early in 2022. These are creating a strong foundation and supporting PMH and PCN teams providing patient centered primary care.

**22 Family Physicians
involved with PSP**

**Congratulations! 30
QI projects
completed!**

**2 Team Mapping/ Pt.
Journey Mapping
Events (Feb & March)**

157 Practice Visits

Looking Ahead:

Through PSP, , doctors continue to have opportunities to consider QI projects which matter to them; improvements such as EMR Optimization & Integration, Workflow & Efficiency, Proactive Care, Team Based Care projects or Panel Management/Review. What will your ideas be for the year ahead?

For support for your upcoming QI ideas please email psp@doctorsofbc.ca and you will be connected with a coach for support.

It has been a pleasure to serve the Mission physician community and I look forward to our possible connections as I move to my new role as Practice Improvement Coach TBC at Doctors of BC.

Respectfully submitted,

Ruthann Robinson
Lead, Practice Support Program- Mission
PSP Regional Support Team, Fraser Health Authority



Community Health & Social Innovation Hub (CHASI)

The University of the Fraser Valley and Social Innovation Hub has been created to support the social, mental, emotional, physical, and economic health of those living in our communities. Through collaborative, multisectoral research and community engagement, the Hub acts as a key strategic health partner in the region, working to identify challenges and opportunities to improve individual and community health.

The Hub has developed multiple formal and informal collaborative relationships with communities, government, and industry. These partnerships, including the Mission Division of Family Practice, are captured in MOUs, participation as advisory committee members, collaborators, and knowledge transfer/ integration partners.

The primary focus of these relationships and the work of the Hub is to support research, support the development, implementation and evaluation of effective policies and practices, and to engage in knowledge acquisition and transfer activities that encourage innovation and evidence-informed policies and programs.

For more information on how you can join or support this work, contact Dr. Martha Dow at martha.dow@ufv.ca or thehub@ufv.ca.

Mission Youth Clinic

Open Wednesdays from 2:30pm – 4:30pm @Fraserview Learning Centre | Ages 12 - 24

How to book an appointment?

Text: 604-424-6523

Email: info@missiondivision.ca

Call: 604-820-1021

Learn more :





Board of Directors

Dr. Carol Pomeroy, Chair
Dr. Harjinder Dau, Treasurer
Dr. Peter Chang
Dr. Shavinder Gill

Bob Ingram
Dr. Andrew Edelson
Councillor Carol Hamilton, Liaison

Advisory Committee

Dr. Carol Pomeroy
Dr. Harjinder Dau
Dr. Gwen Siemens
Dr. Peter Barnsdale
Dr. Laurelyn Juadiong
Dr. Andrew Edelson (retired)

Mission Division Staff

Shona Brown, Executive Director
Kimberly Bergen, MOA/ Admin
Paul Burns, Bookkeeper
Jen Cook, Primary Care Network Manager

Morgan Ducharme, Administrative Assistant
Matt Kornelsen, MOA/ Admin
Sara Hoffmann, Patient Navigator
Cristina Rouillier, Project Manager
Rose Welsh, Administrative Assistant

Ebbinghaus Illusion



Contact

7298 Hurd Street, Mission, BC, V2V 3H6

P: 604-820-1021 F: 604-820-1027

www.divisionsbc.ca/mission

Photos by Cristina Rouillier

The Divisions of Family Practice Initiative is supported by the General Practice Services Committee, a joint committee of the BC Ministry of Health and Doctors of BC.

Local Aboriginal artist and carver Peter Gong, created this symbol to represent the healing hands of Family Physicians around Mission.



Mission

Division of Family Practice

A GPSC initiative