

**IN THIS ISSUE:**

- Announcing RNs i
- Land Based Healing - REGISTER
- EMR Connect - UPDATE
- PCN Q4 Dashboard
- FOOD SENSE for Patients of PCN Clinics

## Announcing RN's in Practice in the Primary Care Network

The Comox Valley PCN has been eager to complete the final phase of the original service plan to implement Primary Care RN's in Practice within our Clinics in the Valley. In collaboration with Island Health and First Nations partners, we are pleased to announce the recent placement of two registered primary care nurses in practices in the Valley.

Bronwen Dinsmore will be practicing on Denman and Hornby Islands and at Southwood Medical Clinic. Jen Spoor will be practicing at Westward Medical Clinic.

Click to learn more about [Bronwen](#) and [Jen](#).

The PCN has one remaining RN position to fill and interviews will be underway in early September.

The PCN Team would like to thank the Family Physicians and Clinic Staff, Island Health and the First Nations partners. We are especially grateful to the local Elders supporting us in designing the scope and function of the RN role and participating in the hiring process.

Once complete there will be three RNs working across family practices and 1.78 FTE of RNs supporting the Health Connections Clinic.

We will have been successful in providing the services of over 4.0 of FTE support to patients in the community.





Curious about the progress of the Primary Care Network?

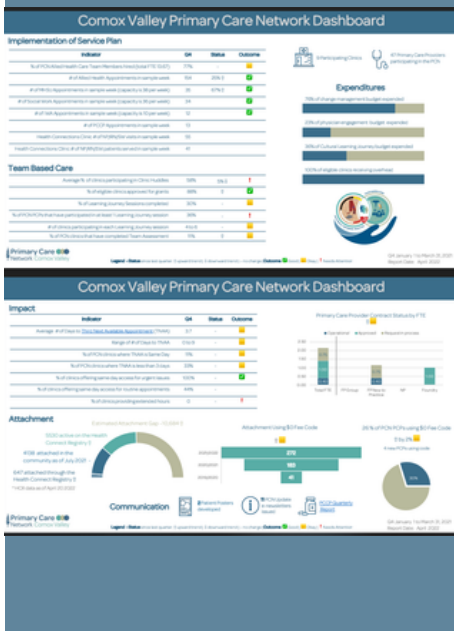
Please [click here](#) to view our dashboard displaying our progress to date

**EMR Connect** is a web-based Island Health application which allows you to upload patient care documents directly and securely onto Island Health's electronic health record platform PowerChart.



We heard from community providers and specialists the need to share more patient documentation with Island health to support the transition of care for their patients. In response, as of June 2020, Island Health now has created 38 new consult templates in the **EMR Connect Application**, for a total of 40 different types of documents available to upload directly into PowerChart. The PCN along with Island Health partners will be reaching out to support your clinic in getting started (or refreshed) on the use of EMR connect. These encounter note templates are currently only available for Physicians, MOA's and Social Workers.

To Learn More about EMR connect and/or to get started, [watch this short video](#)



## IMPORTANT - TEAM-BASED CARE BILLING CODES

In a PCN team, family physicians are compensated for collaborating with allied care providers on the team.

**PG 14033** - An appointment with the PCCP fulfills the obligation for an annual medication review.

**PG 14050, 14051, 14052, 14053** - 1 of two mandatory in-person visits for CDM

**PG 14067** - brief two-way case conferencing about a patient.

**14077** - FP Conference with Allied Care Provider and/or Physician - per 15 minutes or greater portion.

**Team-Based Care Billing Guide found [here](#)**



## HEALTHY COOKING ON A BUDGET

Sheila Fetter, the PCN Dietitian has been meeting with physicians and clinic staff, determining patient needs and clinic workflows and learning each clinic's EMR. She has also been working with the BCCDC and LUSH Valley to coordinate the delivery of this free cooking course to our clientele. Space is limited and is available for low-income patients of PCN participating clinics. [Click here](#) for the full brochure To register patients, please task Sheila in your EMR.

**Thursdays 5:15pm-8:15pm Sept 22-Oct 27**

**FOOD SKILLS FOR FAMILIES**

# FOOD SENSE

## HEALTHY COOKING ON A BUDGET

**JOIN US!**

**FREE SIX WEEK HEALTHY COOKING PROGRAM**

Cook simple nutritious meals  
Learn to read nutrition labels  
Tour your local grocery store

**CONNECTING** people in the kitchen.  
**TEACHING** fun hands-on cooking skills.  
**MAKING HEALTHY EATING** easy, enjoyable and fun.

*Yummy Recipes!*

- Hummus
- Kale Salad
- Roasted Veggies
- Quesadillas
- Granola Bites
- Veggie Fritters
- Homemade Pizza
- Apple Crisp

**PROGRAM DETAILS:**  
Thursdays 5:15-8:15pm  
September 22- October 27, 2022  
Evergreen Lounge at the Filberg Center  
411 Anderton Ave, Courtenay

**BC Centre for Disease Control**  
Provincial Health Services Authority

**BRITISH COLUMBIA**  
Supported by the Government of British Columbia



## Primary Care Community Pharmacist - July 2022

In July, 25% (12) of Comox Valley PCN Primary Care Providers booked patients with Sadie Quintal, our Primary Care Community Pharmacist (PCCP). Most Primary Care Providers booked between 1 and 5 patients in the month and we have 1 *Super Booker* who booked over 6 patients for medication reviews and support in July.



THE UNIVERSITY OF BRITISH COLUMBIA

Pharmacists in PCN Program

Faculty of Pharmaceutical Sciences

The Health Connect Registry provides a centralized waitlist that:

- Connects patients to a primary care provider on a first registered, first attached basis.
  - Reduces the administrative requirements of maintaining waitlists at clinics.
  - Provides a centralized location for clinic staff to direct inquiries about finding a physician.
    - Creates equity for community members looking for a care provider.
  - Supports the development/maintenance of balanced panels for physicians and nurse practitioners who are accepting patients into their practice.
- Supports geographically based attachment for individuals who reside south of the Oyster River to Bowser.

### I have Space on My Panel, What Should I Do?

Any physicians/nurse practitioners who have space on their panel, either for one patient, 10 patients, or 100 patients, are invited to contact Lisa McDougall-Lee, the Attachment Coordinator themselves or through their Office staff to coordinate the attachment process in a way that works for your practice.

contact attachment coordinator Lisa McDougall-Lee,

[lmcdougall@comoxvalleydivision.ca](mailto:lmcdougall@comoxvalleydivision.ca)



HealthLinkBC

## PCN Attachment Code - 97600

All family physicians (FPs) and Nurse Practitioners (NPs) participating in a Primary Care Network (PCN) are asked to submit attachment records so the attachment of new patients can be recorded/counted as a key metric of PCN evaluation. This **“PCN attachment”** (\$0) is tracked using a 97600 administrative fee code that is submitted to the Medical Services Plan Health Insurance BC through Teleplan on a one-time basis. It is only to be submitted once for each patient at the time of their attachment to the FP or NP.

The code is to be submitted when the patient is considered attached to the provider. The process of attachment happens through an initial conversation between the new patient and provider to make sure there is a suitable fit and willingness by both parties to proceed.

### Co Chairs:

**Bonnie Bagdan – PCN Physician Lead** - [bbagdan@me.com](mailto:bbagdan@me.com)

**Michelle Crosby– Island Health, Director CV & CR** - [michelle.crosby@islandhealth.ca](mailto:michelle.crosby@islandhealth.ca)

**Destinée Barrow - Métis Nation BC, Reg. Hlth Coord** - [destineebarrowconsulting@shaw.ca](mailto:destineebarrowconsulting@shaw.ca)

**Tanille Johnston - FNHA, Reg. Primary Care Manager** - [tanille.johnston@fnha.ca](mailto:tanille.johnston@fnha.ca)

### PCN Team:

**Gavin Arthur - PCN Manager** - [garthur@comoxvalleydivision.ca](mailto:garthur@comoxvalleydivision.ca)

**Maureen Clarke - PCN Change Lead** - [mclarke@comoxvalleydivision.ca](mailto:mclarke@comoxvalleydivision.ca)

**Lauralynn Shaefer - PCN Admin. Assistant** - [comoxpcnadmin@comoxvalleydivision.ca](mailto:comoxpcnadmin@comoxvalleydivision.ca)

**Alex Jules - PCN Indigenous Wellness Liaison** - [alexander.jules@islandhealth.ca](mailto:alexander.jules@islandhealth.ca)

**Lisa McDougall-Lee - PCN Coordinator** - [lmcdougall@comoxvalleydivision.ca](mailto:lmcdougall@comoxvalleydivision.ca)

**Audrey Jones - Doctors of BC** - [ajones@doctorsofbc.ca](mailto:ajones@doctorsofbc.ca)

**Jacquie Kinney - PCN Evaluation Lead** - [jkinney@comoxvalleydivision.ca](mailto:jkinney@comoxvalleydivision.ca)

**Evan Humphreys - Island Health, PCN Manager** - [Evan.Humphreys@islandhealth.ca](mailto:Evan.Humphreys@islandhealth.ca)

YOUR PCN TEAM