

FOR LEASE: 852 YATES STREET, VICTORIA
YATES PROFESSIONAL CENTRE

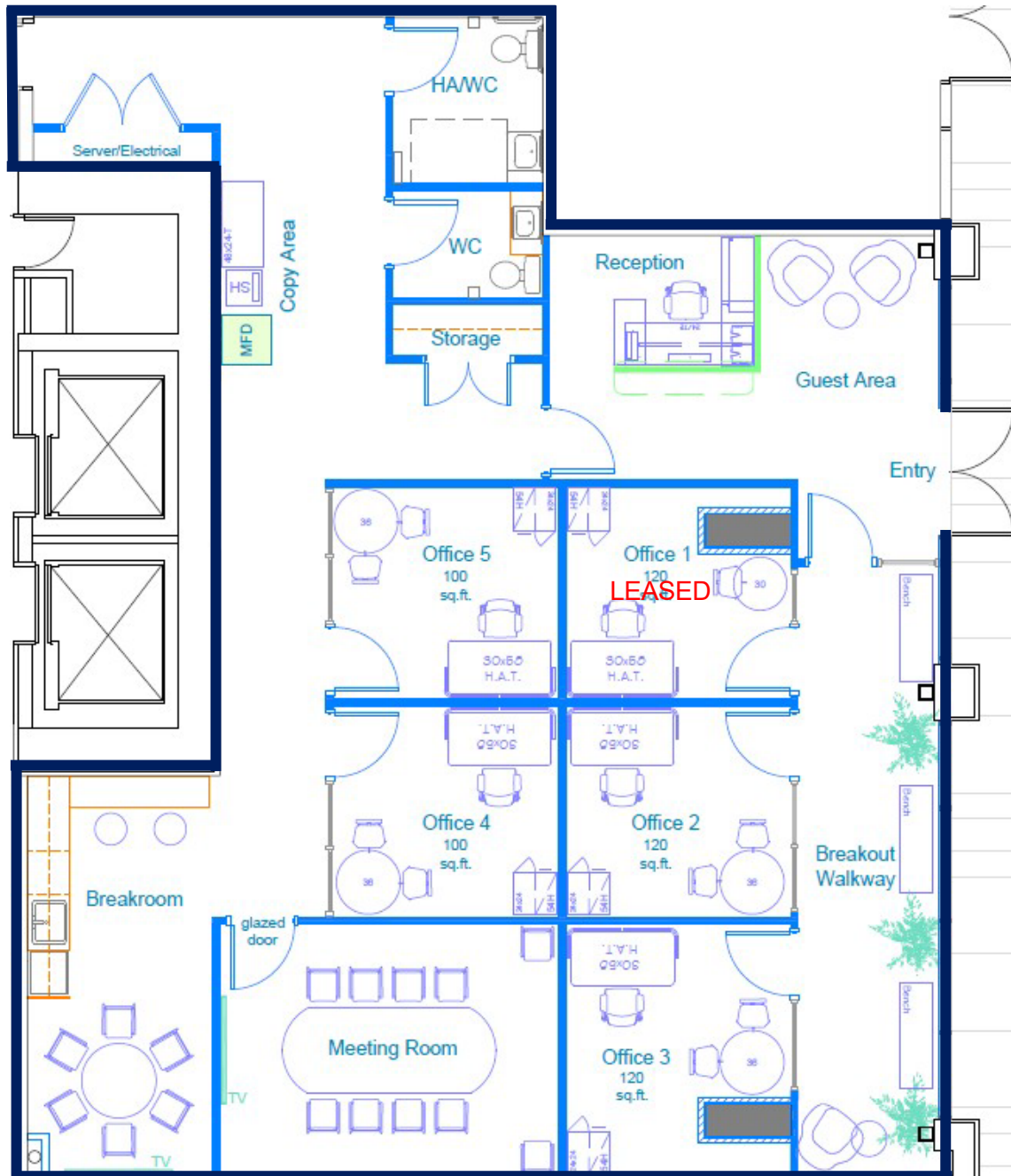
**PRIVATE
OFFICES
FOR LEASE**

Contact for Pricing
Month-to-Month Tenancies Allowable.



Contact:
admin@yatesprofessionalcentre.com
236-471-0748

OVERVIEW



An opportunity to build a new home for your office, away from home.

Yates Professional Centre offers 100-120SF individual offices for lease in a shared office space on Yates Street a major artery into the downtown core.

Yates Professional Centre is on the ground floor of one of Chard Development's newest projects the Yates on Yates in the heart of the Harris Green District and Victoria's fastest growing community.

Offices are individually locked with RFID and intercom access to the building. Each office has use of the boardroom, shared kitchen with breakroom, and two washrooms.



Prime Harris Green Location



Brand New Mixed Development



Competitive Lease Rates with short term lease options



Professional Business Centre Shared Space and Facilities



Units ranging from 100 – 120 SF + Boardroom Access

HIGHLIGHTS

OFFICE SIZE

100-120 SQ FEET

YEAR BUILT

2023

PRICE

Individual offices
contact for pricing

ACCESS

Individually locked offices,
intercom access to the building
that links to any phone

LOCATION

852 Yates Street

Street parking and bus stop out
front. Close proximity to
Johnson Street parkade

AMENITIES

Use of boardroom, mailbox,
shared kitchen, break area,
accessible washroom

