

From: [Chelsea Brookes](#)
To: [Brookes, Chelsea](#)
Subject: TEST - June Newsletter
Date: July-05-17 2:12:39 PM

Under the new Canadian Anti-Spam Legislation, we are required to ask you for your consent. You can withdraw consent at any time.

I want to Continue
Receiving Emails
<!--[if !ms0]-->

I want to Continue
Receiving Emails

<!--[endif]-->

[View in Browser](#)

Share Email:     



Division *FOCUS*

June 2016

In this issue:

- » [Highlights from June 15 and April 18 Engagement Events!](#)
- » ["Co-Creating the Future of Integrated Health Care"](#)
- » [Your Practice and the Patient's Medical Home](#)
- » [Take a Journey With Us: Fostering a cohesive caring community](#)
- » [Nurse Practitioners in Family Practice: A Request for Expressions of Interest](#)
- » [Pathways is Coming Soon. What is it? How will it help?](#)
- » [Physician Locum Service](#)
- » [Residential Care Update](#)
- » [Two Residential Care Physician Lead Positions](#)
- » [Information Sharing in the Context of Mental Health and Substance Use in BC - Best Practice Resources](#)
- » [Polypharmacy Risk Reduction Across the Three Care Environments](#)
- » [College of Pharmacists seeking Physician Input](#)
- » [The Division can help!](#)
- » [Interior Health Updates](#)
- » [Extra Reading and Resources](#)
- » [Upcoming Meetings and Events](#)

Highlights from June 15 and April 18 Engagement Events!

Thanks to everyone who attended the meetings around Primary Care Transformation and Your Practice. On April 18 you heard an update about the Ministry of Health transformation agenda, had the opportunity to share your preferences and ideas on what approaches and or models are likely to work locally, and assessed your level of readiness to embark on this change. You also heard a pitch about the integrated multidisciplinary family practice business plan. [Let us know](#) if you'd like to learn more about the business plan!



On June 15, we had more than 33 family physicians in the room for an event co-facilitated by Stephen Brown, Deputy Minister of Health, and Dr. Chip Bantock. We were also joined by Dr. Brenda Hefford from Doctors of BC, Martin McMahon with Interior Health, Doug Hughes (Assistant Deputy Minister Health System Policy) and Shana Ooms (Senior Director) with the Ministry of Health. The tone of the meeting was very positive and there was a commitment from partners to support the community in enhancing access to primary care for patients by enhancing Patient Medical Home capacity and establishing specialized care capacity. We discussed a

variety of concepts and models that could work for our community.

So what's next for primary care transformation? We've learned that Kamloops will be considered one of five provincially designated 'learning' or 'proof of concept' communities over the next year whereby a streamlined community focused service delivery model that enable simple clear patient pathways across the continuum will be tested. Resources will be directed to support the work and the Ministry of Health commits to ensuring the removal of barriers to allow for variance and testing multidisciplinary/team based approaches as 'proof of concept', with an eye on the triple aim. Your leadership team will be working with our partners over the next month to develop an action plan. If you haven't already done so, please [complete a short survey](#) or call us at 250-372-1621 to express your interest in any of the 'proof of concept' areas and share other ideas.



"Co-Creating the Future of Integrated Health Care"

Interested in what the GPSC presented on June 15 at our engagement event and at the June 17 provincial round table? Dr. Brenda Hefford presented "Co-Creating the Future of Integrated Health Care" to our members. [Click here](#) to watch the presentation or read the accompanying notes with additional background information.

Your Practice and the Patient's Medical Home

Interested in seeing how well your practice achieves the attributes of the Patient's Medical Home? Check out a variety of resources, including the self assessment tool on the [BCCFP website](#).

Take a Journey With Us: Fostering a cohesive caring community

In May, in recognition of National Child and Youth Mental Health week, the Thompson Region's Local Action Team ran a bus tour of local organizations that offer Child and Youth Mental Health and Substance Use Services in the community. With a total of 120 minutes allocated for the tour, 44 community service providers toured 25 organizations in our community with the opportunity to go into the John Tod/Boys and Girls Club and the Safe House. The goal of the event was to provide the opportunity for providers to connect with each other and to be more aware of the caring community network available to care for patients and families facing Mental Health and Substance Use challenges in their lives.



Of those who attended, 100% of participants said the tour increased their awareness and understanding of mental health and substance use services in our community and would recommend running a similar tour again or making a virtual tour of the organizations. The best part of the tour was definitely getting out and seeing the inside of a couple facilities (and the snacks!) Our Local Action Team wants to thank the organizations who supported their staff to participate in this event. The overwhelming response to attend the tour speaks to just how service

providers want to build stronger relationships to be able to work better across agencies. If you think a virtual tour of these organizations would be helpful please let us know by emailing mwalsh@divisionsbc.ca.

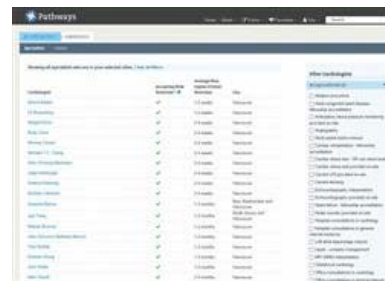
[Click here](#) to read the front page article published in Kamloops This Week and [here to view the tour map](#).

Nurse Practitioners in Family Practice: A Request for Expressions of Interest

Are you interested in co-locating a Nurse Practitioner with your practice? The Division will be assisting Interior Health by co-hosting site visits with Nurse Practitioners currently interested in working in Kamloops. The immediate opportunity is for an NP focused on the Older Adults population on the South Shore. If your office is interested in additional primary care capacity and has physical space, please [send us an email](#) or call 250-372-1621 to express interest.

Pathways is Coming Soon. What is it? How will it help?

The Thompson Region Division of Family Practice will be implementing Pathways in our community in the coming months. Pathways is a physician designed web-based resource that Family Practitioners, other authorized health care providers, and their MOAs use to make Specialist and clinic referrals.



Pathways has proven to be very useful in other communities in efficiently identifying Specialists/health care providers who best meet the needs of the patient being referred. It has significantly improved the quality of referrals made as physicians can be more informed about individual Specialists/health care providers' interests and/or areas of practice, referral processes, required investigations, wait times, referral preferences, and needed referral forms (if applicable). It also provides a growing, curated library of resources that can enhance your clinical practice. Please see a couple of screenshot examples below.

In the coming weeks we will be connecting with yourself, and your MOA, in order to request information to help populate the resource with our local physicians and your services. Stay tuned. If you have any questions before then please do not hesitate to contact Laura Becotte, Project Lead at 250-372-1621 or lbecotte@pathwaysbc.ca.

Physician Locum Service

Building on the success of our A GP For Me feasibility study, Excel Personnel Inc. has launched its [Physician Locum Service](#) in the Thompson Region. Karen Watt and Excel Personnel will be contacting your MOA soon to ask if they can provide a lunch n' learn session so you can learn more about this service. If you have any questions, please contact Karen Watt by phone 1-877-374-3853 or via email at karen@excel.bc.ca.

Residential Care Update

Did you know that you do not have to have patients currently in residential care to receive the residential care incentive? And did you know we are supporting

physician leadership to help develop solutions to improve your experience when you have patients in residential care homes? Our goal is to have all family physicians in full- or part-time practice receiving this benefit.

The GPSC has launched the initiative to support physicians to design and implement local solutions that deliver GP MRP services to patients living in residential care homes. Find out if you're [eligible to register](#). If you have not registered but would like to, please contact the Division. If you have any questions, please contact Laura at 250-372-1621 or lbecotte@divisionsbc.ca

Consistent with the guidelines you received when you registered, this is our request for you to submit your 3rd quarter billing for the period April 1 to June 30, 2016. We will process payment within 15 days of receipt. [Click here for a copy of the invoice](#) for your use.

Interested in how we are doing? Click the following links to see Residential Care Initiative Quality Improvement Reports for the [Thompson Region](#), [Interior Health Region](#) and [provincially](#).

Two Residential Care Physician Lead Positions

Are you passionate about caring for older adults and have experience providing care for individuals living in Residential Care Homes? Are you experienced or interested in quality improvement work?

The Thompson Region Division of Family Practice is looking for two physicians who would work collaboratively with the Division, GPSC Residential Care Working Groups, and MRPs to provide guidance and support around quality improvement projects, and support MRPs to address and problem solve gaps in care.

If you are interested in this opportunity please submit an expression of interest to thompsonregion@divisionsbc.ca by June 30. [Click here to access the full job description](#).

Information Sharing in the Context of Mental Health and Substance Use in BC - Best Practice Resources

As part of our work on the Kamloops Child and Youth Mental Health and Substance Use Local Action Team, co-chaired by Physician Lead Dr. Shirley Sze, we quickly identified that there were significant barriers to information sharing regarding our patients between the various agencies i.e. IH Mental Health, MCFD, School District etc. to ensure better integration of their care. We also recognized that this required a provincial solution.

Jonny Morris, MA, A/CEO, Senior Director, Policy, Research, & Planning, CMHA BC, Canadian Mental Health Association, BC Division was the lead identified to sort out this issue and after working on this for the past two years, he is able to forward the information below that has met provincial approval for best practices for information sharing. We hope this information will be useful to you and your interaction with other agencies that deal with your CYMHSU patients.

The resources are:

- [Information Sharing in the Context of Mental Health and Substance Use in BC](#)
 - [Information Sharing in the Context of Child and Youth Mental Health and Substance Use in BC](#)
 - [Best Practices for Service Providers: Privacy and Information Sharing – FACT SHEET](#)
 - [Information Sharing for Young People – FACT SHEET](#)
 - [Privacy for Parents and Caregivers – FACT SHEET](#)
-

Polypharmacy Risk Reduction Across the Three Care Environments

On Friday April 29th, 2016 the GPSC Residential Care Project Working Group hosted the Shared Care Polypharmacy Risk Reduction Circle of Care Education Session for health care providers from Acute, Residential and Community environments. 30 individuals attended the session. The attendees ranged from family physicians, acute and community pharmacists, residential care home staff, community nurses, nurse practitioner, community mental health, and health care quality improvement staff. The facilitator for the day, was Dr. Chris Rauscher, who is the Shared Care Polypharmacy Risk Reduction Clinical Lead.



The first portion of the session focused on educating the group around Polypharmacy Risk Reduction for older adults and the second portion, discussed and identified next steps to implementing polypharmacy risk reduction strategies into care.

Some key themes that emerged throughout the session included: importance of incorporating patients goals of care into medication plan; patient and family input is invaluable; difficulties accessing patient information (pharmanet, RAI, past diagnoses); difficulties navigating who else is involved (pharmacies, prescribers); and importance of including the three care environments into future conversations.

Click here for more information on the [Shared Care Polypharmacy Risk Reduction initiative](#).

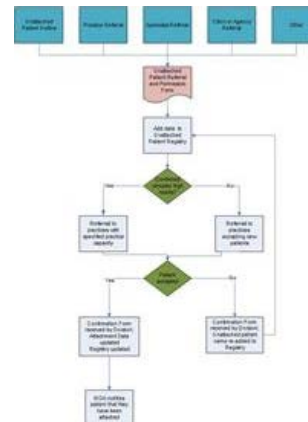
College of Pharmacists seeking Physician Input

How do you feel about pharmacists being able to prescribe drugs to patients? Doctors of BC is preparing a formal response to the College of Pharmacists regarding its Draft Framework proposal that allows them to prescribe. Doctors of BC requests that you complete a short survey by June 30 to let them know what you think. [Click here to learn more](#) and [here to complete the survey](#).

The Division can help!

The Division has just completed a patient attachment system pilot project (see diagram below) that has included creating a patient registry. This tool collects information from people who are looking for a family doctor. The Division uses the registry to refer unattached patients to a practice that has identified they have capacity for new patients. Patients have been successfully attached through this mechanism.

We acknowledge all practices are currently over capacity. However, should your practice have space, please contact us. We can provide you with patient contact information and other supports. We're here to help.



Interior Health Updates

Palliative Care

- Interior Health has introduced a new process for accessing short stay community hospice beds. Click here to [read about the process](#), here for the [Community Hospice Bed Access referral form](#), and here for the [Palliative Program referral form](#).

Palliative Physician Lead

- Interior Health is seeking a physician representative for the IH Palliative Care Implementation Working Group. Contact Kathleen Chouinor for

more information [by email](#) or by telephone at 250-851-7469.

Rapid Access to Psychiatry Program

- The Rapid Access to Psychiatry Program referral form has been updated. Click here to [read the letter from Dr. Kurt Buller](#), here for the [updated RAPP form](#), and here for the [MHSU intake referral form](#).

Extra Reading and Resources

[Click here](#) to read the latest edition of the Divisions Dispatch newsletter.

[Click here](#) to read the latest edition of the GPSC newsletter.

[Click here](#) for the latest GPSC Meeting Summary.

[Click here](#) to access information about UpToDate.

[Click here](#) to read the latest edition of Interior Health's newsletter.

[Click here](#) to view the Endocrinology Telehealth tri-fold pamphlet.

Upcoming Meetings and Events

Medical Clinic Grand Opening: Doctors Twila Burgmann, David Kramer, Pia Pace-Asciak, and John Cleland are pleased to announce the grand opening of their new medical clinic at 520 St. Paul St. They invite you to join them for wine and cheese at their open house on **Tuesday, June 28** from 4:30-7:00 PM.

Division Board of Directors: Your Division Directors meet monthly to review progress and develop strategies to address emerging opportunities. Upcoming Board Meetings: July 6, 2016

CME: Medical Assistance in Dying (MAiD): The Central Okanagan Division of Family Practice is hosting a CME event on **July 19, 2016**. Representatives from the College of Physicians and Surgeons of BC and Interior Health will be in attendance to speak to the rules, guidelines, and clinical approach to this issue. Contact Monica McLean by email at centralok@divisionsbc.ca for more information or to register.

Thompson Collaborative Services Committee: Upcoming CSC Meetings: TBA

If you have items to bring forward to the Board and/or CSC please contact thompsonregion@divisionsbc.ca

Contact Us:

<https://www.divisionsbc.ca/thompson/home>

Phone: 250-372-1621

Fax: 250-372-1610

thompsonregion@divisionsbc.ca

Board Members:

Dr. Chip Bantock, *Chair*
Dr. Graham Dodd, *Vice Chair*
Dr. Ben Anders, *Secretary*
Dr. Lennard Pretorius, *Treasurer*
Dr. Krista Bradley, *Director*
Dr. Peter Loland, *Director*
Dr. Servaas Swart, *Director*

Support Team:

Brenda Phillips, *Operations Manager*
Monique Walsh, *Shared Care*
Laura Becotte, *Project Lead*
Chris Matuschewski, *Recruitment*
Chelsea Brookes, *Executive Assistant*
Tessa Girodat, *Administrative Assistant*
Veronica Smith, *Finance*

Newsletter Production Team:

Chelsea Brookes, Dr. Chip Bantock

If you have something to share for the September newsletter, please provide it to thompsonregion@divisionsbc.ca by December 1, 2016.

If you no longer wish to receive monthly newsletters from the Thompson Region Division of Family Practice and wish to unsubscribe from our newsletter mailing list, please [click here](#).

Share Email:     

[Subscribe](#) | [Unsubscribe](#) | [Printable Version](#)

209 - 310 Nicola Street
Kamloops, British Columbia
Canada
V2C 2P5

chbrookes
209 - 310 Nicola Street
Kamloops British Columbia V2C 2P5
Canada

This email is intended for cbrookes@divisionsbc.ca.

[Update your preferences](#) or [Unsubscribe](#)

delivered by
 **campaigner**®