



Sunshine Coast
Division of Family Practice
An FPSC initiative

ANNUAL REPORT 2022-2023



APRIL 2022 – MARCH 2023

Divisions of Family Practice

An initiative of the Family Practice Services Committee

divisionsbc.ca/sunshine-coast

OVERVIEW // APRIL 2022 - MARCH 2023

The Sunshine Coast Division of Family Practice represents physicians who support the communities along the lower Sunshine Coast, including Earl's Cove, Langdale, Madeira Park, Pender Harbour, Sechelt, Robert's Creek, and Gibsons.

Together, the members work to improve local primary care, increase local physicians' influence on health care delivery and policy, and provide professional support for physicians. Membership is open to all physicians practising or recently retired on the Lower Sunshine Coast, including specialists and locums.

Incorporated in November 2011, the Division currently has 91 members, including 36 family physicians, who work in six medical clinics.

Divisions of Family Practice are sponsored by the Family Practice Services Committee, a joint committee of the BC Ministry of Health and Doctors of BC. Divisions of Family Practice are designed to improve patient care, increase family physicians' influence on health care delivery and policy, and provide professional satisfaction for physicians.

MESSAGE FROM THE CHAIR & EXECUTIVE DIRECTOR

As 2023 came to an end we reflect on the impact that the pandemic had and how quickly day-to-day activities are returning to normal. The Division continues to recognize the benefits for both connection and in-person meetings with our many members, partners, and stakeholders through a balanced manner. We remain ever cognizant of physician fatigue, global staffing shortages and the increasing demand on the health system and our members.

A very special thanks is extended to Dr. Adetunji Oremakinde, Dr. Ted Krickan and Dr. Geoff McKee for their past contributions in supporting the Division and its valued members. The Division wishes much success to Dr. Oremakinde and his family as he pursues additional surgical expertise in Ontario and to Dr. Krickan and Dr. McKee who opted to not renew their terms in favour of some much-needed work-life balance and to spend time with family and young ones.

VISION //

Healthy, thriving Sunshine Coast communities supported by resilient doctors and comprehensive community-based health care.

MISSION //

To support and provide a voice for physicians and foster action to promote system change and accessible, comprehensive, and sustainable health care on the Sunshine Coast.

VALUES //

- Community centered solutions through team-based care
- Physician health, well-being, and empowerment
- Cultural humility on community engagement
- Teamwork, collaborative and partnership
- Diversity, equity, and inclusion
- Creativity, innovation, and openness to change
- Integrity, accountability, and transparency

PRIORITY STRATEGIES //

- Primary Care Network
- Recruitment & Retention
- Governance Structure
- Voice of Physicians
- Communication
- Physician Well-being
- Community Engagement
- Responsive Projects

The Board remains increasingly committed to its members through ongoing board leadership through a March 2023 governance planning session led by Maria Turnbull of Vantage Point. Key strategic priorities and Board roles and responsibilities were further explored and refreshed while simultaneously keeping in mind its members whom the Division both serves and advocates for.

In keeping with our strategic priorities, the Division partnered with the Medical Staff Association to help establish a Recruitment and Retention Working Group whose prime objective is to support all physician opportunities on the Sunshine Coast. We also hired a communication specialist to support public communication activities such as articles in local publications, social media and to specifically support the newly established Recruitment and Retention Working Group. A special thanks to Dr. Nancy Yao for leading this important work as well as the tireless commitment of physicians who provided background insight in supporting this key priority. The Division continues to partner with the North Shore and Sea to Sky Division to advance joint recruitment opportunities made available through FPSC funding.

Future effort will focus on the establishment of a Division newsletter that will consolidate, and significantly streamline, Division communication to its members.

Late 2022 saw the Division host two (2) engagement sessions that supported preliminary discussions with both medical and community partners towards the establishment of a “new” community health centre primary care model on the Sunshine Coast. This great work will be continued into 2023 and beyond through the establishment of a dedicated working group.

The Division will continue to make significant gains in successfully strengthening our Board and its ability to reflect the membership and communities we serve and to ensure we are connected to our physician membership. We have achieved gains in both our operational and financial functions that have allowed us to dedicate greater focus to our members and the work that is most important. The Division has actively pursued funding opportunities that support the advancement of physicians on the Sunshine Coast and has achieved increased success in this regard. Our financial infrastructure picture is strong as is all project related funding including Shared Care.

Perinatal in PCN and the submission of a draft PCN service plan to the Ministry of Health in 2022 for initial review, which was approved in February 2023, are two such examples of Division-led projects. The provincial PCN governance refresh will see Divisions leading PCN roll-out thus ensuring a greater voice for physicians. The PCN service plan aims to integrate team-based care resources into patient medical homes through an ~\$4M Ministry of Health commitment. Patient attachment will remain a key focal point as PCN is rolled out over the next four years. Additionally, with the Sunshine Coast Foundry announcement, the Division, who played a key role in supporting its application, will remain involved in all planning aspects. This is a huge investment for children and youth! A special thanks to those physicians who are part of these and other Division projects.

Over the past year, the Division team and key physician leaders have continued to have regular meetings with the Ministry of Health, FPSC, community stakeholders and Vancouver Coastal Health, thru a myriad of tables including the PCN Steering Committee and the Collaborative Services Committees. It is these collaborative efforts that will guide improvements for both patient care and family practitioners. With the ratification of the new PMA, the Ministry of Health, in partnership with Doctors of BC, has renewed its commitment to longitudinal family medicine.

Over the coming year, the Sunshine Coast Division of Family Practice will continue to work with members, other Divisions, community leaders, Vancouver Coastal Health, and the Ministry of Health to improve coordination and physician supports across the system and the streamlining of patient access to community resources. The advancement of physician health human resources and community health centre planning will remain continued priorities for the Division.

In closing, we would like to thank our Board for their ongoing leadership and dedication to supporting our organization and our members over the last year, which clearly demonstrated the value of a strong and diversified Board. We will continue to reach out to you, the members, through monthly Board meetings and PCN updates as well as a myriad of communications modalities. We also encourage you to become or remain involved in the important work that we do or to consider joining us at a Board meeting to see what is going on behind the scenes.

We also want to extend a huge thanks to our dedicated staff for their effort during the last year as activities have slowly ramped up and returned to normal.

As a member, your engagement in improving patient care continues to be our drive to improve and advocate for the lives of our membership and the patients we serve. 2023 is going to be an exciting year for the Division.

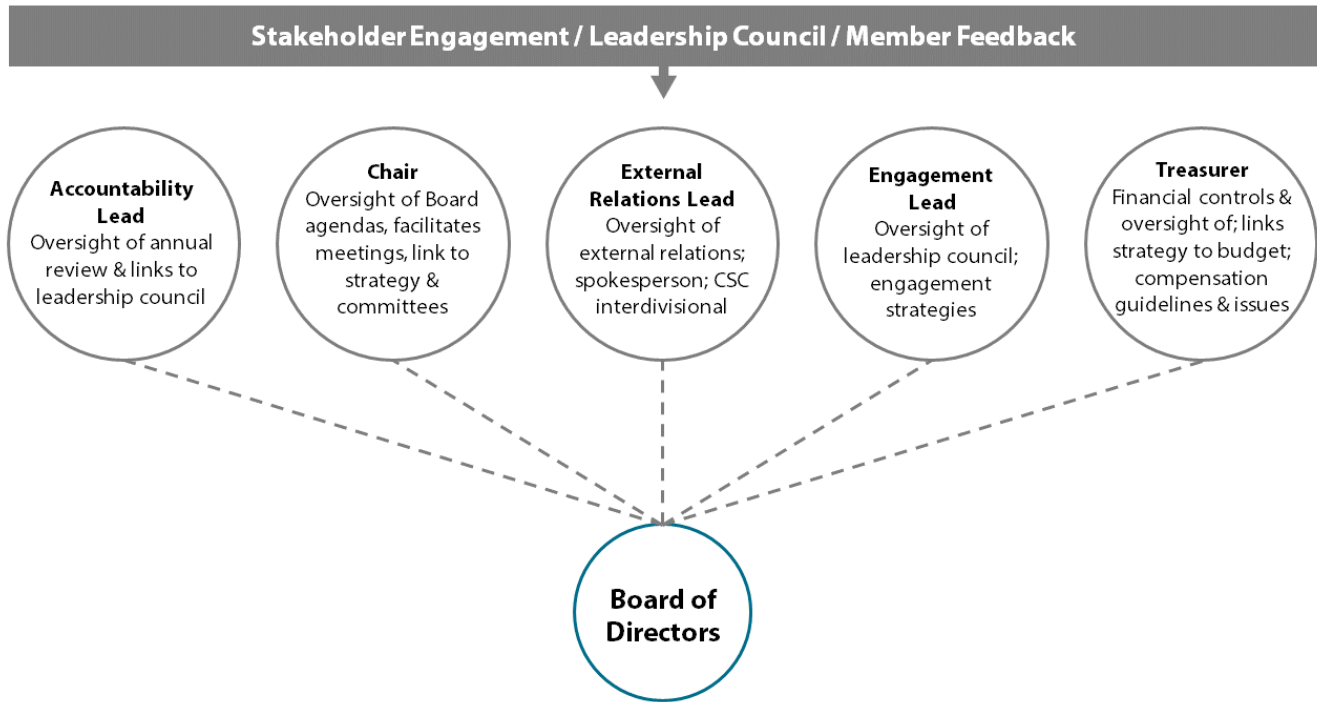
Respectfully submitted,

Dr. Annette McCall
Chair

Michael Aeberhardt
Executive Director

March 2023

BOARD GOVERNANCE STRUCTURE // MARCH 2023



Board of Directors April 2022 – March 2023

Chair / Accountability Lead
Dr. Annette McCall

External Relations Lead
Dr. Rob Lehman

Engagement Lead
Dr. Edward Krickan

Treasurer
Mark Wentzell

Directors at Large
Dr. Adetunji Oremakinde
Dr. Geoff McKee
Vacancy

Collaborative Services Committee April 2022- March 2023

Dr. Rob Lehman (Co-Chair)
Marie Duperreault (Co-Chair)

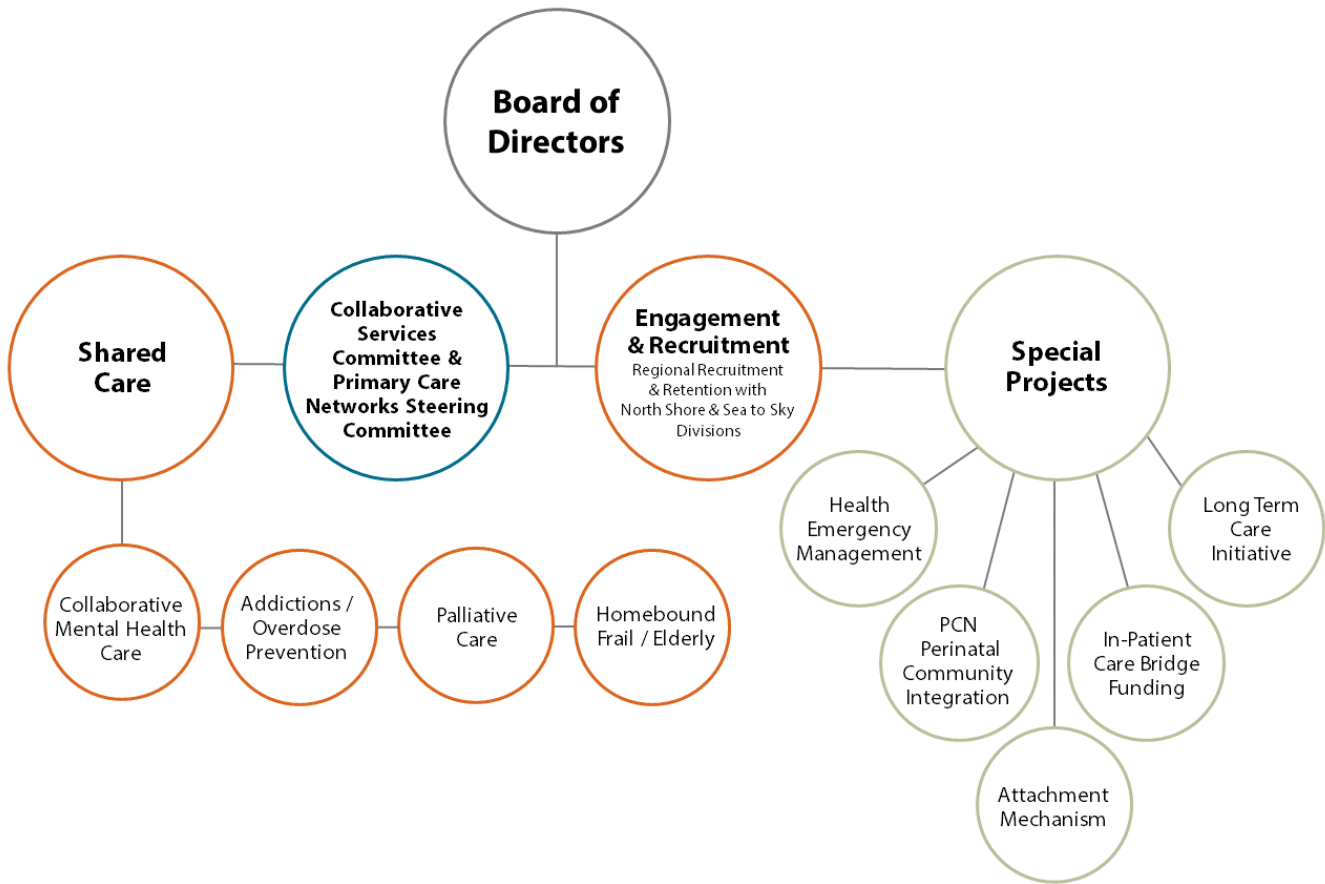
Dr. Karen Forgie, MSA
Dr. Edward Krickan, Division
Dr. Marius Welgemoed, LMD
Carole Gillam, VCH
Bree Beveridge, FN VCH
Dr. Nardia Strydom, VCH
Dr. Yasmin Jetha, VCH
Rochelle Le Sueur, VCH
Marina McBride, FPSC
Meghan Burrows, FPSC
Susann Richter, PHHC
Dr. John Harding, MHO
Shilo Joe, shishálh Nation
Nick Gaskin, shishálh Nation
Dr. Tracy Monk, FPSC Pathways

PCN Steering Committee April 2022 – March 2023

Tri-Chair's
Dr. Rob Lehman, Division
Marie Duperreault, VCH
Nick Gaskin, shishálh Nation

Members
Dr. Patricia Rutherford
Dr. Rayna Sivakova
Dr. Ahmad Al-Araji
Shari Myhill-Jones, VCH
Susann Richter, PHHC
Johanna Tremble, PAT
Kathleen Coyne, PAT
Carol Gillam, VCH
Ann Wang, MoH
Helen Tung-Allin, MoH
Rochelle Le Sueur, VCH
Marina McBride, DoBC

OUR BOARD AND WORKING GROUP // MARCH 2023



VISION AND STRATEGIES // 2021-2024

Vision

Healthy, thriving Sunshine Coast communities supported by resilient doctors and comprehensive community-based health care

Mission

To support and provide a voice for physicians and foster action to promote system change and accessible, comprehensive and sustainable health care on the Sunshine Coast

Values

Community centred solutions through team-based care

Physician health, well-being and empowerment

Cultural humility in community engagement

Teamwork, collaboration and partnership

Diversity, equity and inclusion

Creativity, innovation and openness to change

Integrity, accountability and transparency

Priority Strategies

- **Primary Care Network** - Implement and evaluate PCN Service Plan
- **Recruitment and Retention** - Recruit and support retention of additional physicians
- **Governance Structure** - Review and energize
- **Voice of Physicians** - Listen with openness and engage collaboratively
- **Communication** - Promote deep understanding of the role of physicians in leveraging system change
- **Physician Well-being** - Embed commitment in every aspect of our work
- **Community Engagement** - Strengthen connection with local governments and community planning tables
- **Responsive Projects** - Develop projects, including a Community Health Centre, that responds to emerging needs including team-based care

Planned Outcomes

- **Patients/Residents** are attached in a meaningful way to health services through the Sunshine Coast Primary Care Network
- There is an increase in the number of **physicians** effectively meeting the health needs of residents through team-based care
- **Physicians and other stakeholders** are fully engaged in regular dialogue, partnership and collaboration
- The **Division Board** continues to be effective and is responsive to emergent issues

PROGRAM HIGHLIGHTS // SHARED CARE

Addictions / Overdose Prevention – completed in January 2023

Dr. Joerg Jaschinski, Lead

Dr. Suzanne Walter
Dr. Anthony Barale
Dr. Brian Myhill-Jones

In collaboration with VCH,
BCEHS and community
partners

Kathy Copeman-Stewart,
Project Manager

- Hosted an education session on fentanyl patch prescribing with pharmacists and family physicians on the Coast.
- Collaborated with Sechelt Business Association and BCEHS to provide an education session on naloxone training.
- Supported the development of a policies and procedures manual for the addiction clinic.
- Hosted a session with addiction physicians to review prescribing and clinic processes.
- Contributed to community education through Coast Reporter.
- Supported early discussions for a broader collaborative mental health project (see below).

Collaborative Mental Health Care

Dr. Rahul Gupta,
FP / Specialist Lead
Dr. Patricia Rutherford,
Specialist Lead
Dr. Annette McCall, FP Lead

Dr. Suzanne Walter
Dr. Anthony Barale
Dr. Jennifer Baxter
Cayce Laviolette,
PCN Social Worker
Monica Stein, VCH

Kathy Copeman-Stewart,
Project Manager

Over a six-month period, the Working Group drafted, submitted, and was approved for a two-year project to:

- Develop and evaluate a collaborative mental health care model on the Sunshine Coast integrating psychiatry into the family physician offices.
- Host in-person group visits to expand access to counseling.
- Provide trauma education to providers & community.

Homebound Frail / Elderly Seniors

Dr. Annette McCall, FP Lead
 Dr. John Sloan, Lead
 Homebound Frail Seniors

Dr. Joerg Jaschinski
 Dr. Carmen Goojha
 Shari Myhill-Jones, VCH
 Pamela Trant, Nurse
 Practitioner
 Cayce Laviolette, PCN SW
 Ava Mundy, PSP
 Johanna Trimble, Patient Voice

Kathy Copeman-Stewart,
 Project Manager

- Leveraged the talk in Sechelt by Andre Picard on his book 'Neglected No More' advocating for improved community/home-based services for elders. In conjunction with this, we hosted a lunch and engagement session with physicians, VCH and community partners to explore assets, gaps, and potential strategies on the Sunshine Coast.
- Commissioned and completed an evaluation of a homebound frail patient panel to better understand patient needs, services, and impact on hospital services.
- Supported a literature search on models for home-based services for frail seniors undertaken by a medical student.
- Collaborated with the Resource Centre to host a caregiver support network consultation with over 50 people representing caregivers, physicians/health providers and community organizations. This dialogue informed next steps for an ongoing network with newsletter and regular meetings through the Sunshine Coast Resource Centre.

Palliative Working Group – completed in January 2023

Dr. Carmen Goojha, Chair

Dr. Annette McCall
 Petrina Wing, VCH
 Joanne Connelly, VCH
 Susann Richter, PHHC
 Jennifer Hunsche, PHHC
 Jackie Scott, Coast Hospice
 Tess Huntly, Coast Hospice

Kathy Copeman-Stewart,
 Project Manager

- In collaboration with Hospice Society, completed and released an environmental scan on palliative care on the Sunshine Coast identifying current needs, services and gaps.
- Continued to liaise with family physicians to promote advance care planning.
- Continued to contribute to the Green Sleeve initiative led by Hospice.
- Presented to the provincial Shared Care Committee (June 2022) on the Green Sleeve initiative to explore spreading this to other communities.
- Hosted our final working group meeting and celebration in January 2023.

PROGRAM HIGHLIGHTS // ADVOCACY & ENGAGEMENT

Collaborative Services Committee (CSC)

Dr. Rob Lehman, Co-Chair
External Relations Lead

Marie Duperreault, Co-Chair
Director, Sechelt Hospital

Dr. Karen Forgie, MSA
 Dr. Edward Krickan, Division
 Dr. Annette McCall, Division Alt
 Dr. Marius Welgemoed, LMD
 Sean Parr, VCH
 Carole Gillam, VCH
 Dr. Nardia Strydom, VCH
 Dr. Yasmin Jetha, VCH
 Bree Beveridge, FN VCH
 Patrick Curley, MoH
 Ann Wang, MoH
 Marina McBride, FPSC
 Meghan Burrows, FPSC
 Susann Richter, PHHC
 Dr. John Harding, MHO
 Shiloh Joe, shíshálh Nation
 Nick Gaskin, shíshálh Nation
 Dr. Tracy Monk, Pathways

Michael Aeberhardt,
Division Executive Director

Sonja Sorensen,
Division Administrative Manager

- Co-chaired by Dr. Rob Lehman and Marie Duperreault.
- Focused on PCN priorities and service plan oversight.
- Ongoing PCN dialogue with physicians and VCH senior staff.
- Research and analysis of health care gaps and assets on the Sunshine Coast.

Advocacy

- Advocate for rural issues and rural considerations at the Regional Divisions and VCH meetings (ICSC).
- Advocate for rural approach to PCN (Primary Care Networks).
- Advocacy for child and youth mental health resources, such as a Foundry, for the Sunshine Coast.
- Advocacy for a new Sunshine Coast primary care community health clinic model.

PCN Steering Committee

Dr. Rob Lehman, Tri-Chair
 Marie Duperreault, Tri-Chair
 Nick Gaskin, Tri-Chair

Members

Dr. Ahmed Al-Araji
 Dr. Patricia Rutherford
 Dr. Rayna Sivakova
 Shari Myhill-Jones
 Carol Gillam, VCH
 Ann Wang, MoH
 Helen Trung-Allin, MoH
 Rochelle Le Sueur, MoH
 Marina McBride, DoBC
 Kathleen Coyne, PAT
 Johanna Tremble, PAT
 Susann Richter, PHHC

Michael Aeberhardt,
 Division Executive Director

Michelle Bruecker,
 PCN Project Coordinator

- Early draw primary care social worker expanded to include all five (5) sunshine coast patient medical homes.
- Endorsed a post implementation evaluation of the early draw PCN social worker.
- Ministry of Health HSIAR attachment data received and reviewed.
- PMH attachment gaps analyzed by PSP thru review of clinic panels to support service plan submission and validation of HSIAR attachment data.
- Patient Advisory Table (PAT) and Indigenous Advisory Table (IAT) terms of reference developed, approved and members recruited.
- Ongoing clinic engagement support from Dr's. Rayna Sivakova, Rob Lehman, Patricia Rutherford and Ahmad Al-Araji.
- Medical and stakeholder engagement to seek service plan design, strategy, and resourcing input.
- Service plan submitted to the Ministry of Health, revised and resubmitted based on formal review. ADM of Primary Care notional approval February 2023.
- Ministry of Health approves early draw request for Nurse Practitioner and 2nd PCN Social Worker.
- San'yas cultural training offered to medical, clinical and PCN Leaders.

Engagement & Recruitment

Dr. Ted Krickan,
 Engagement Lead

Dr. Annette McCall,
 Recruitment Lead

Michael Aeberhardt,
 Division Executive Director

Sonja Sorensen,
 Division Administrative
 Manager

- Annual Walk with Your Doc.
- Joint Division and MSA AGM in November 2022.
- Ongoing coordinated recruitment efforts for ROS, IMG's & PRA's.
- Through a tri-Division FPSC partnership onboarded a recruitment coordinator.
- Division Holiday Party at the Gibson's Public Market.
- Partnered with the MSA to support the establishment of a Recruitment & Retention working group.

PHOTO HIGHLIGHTS // THANK YOU TO OUR MEMBERSHIP



View more event photos in the 'Doctors Only' portal on divisionsbc.ca/sunshine-coast

