

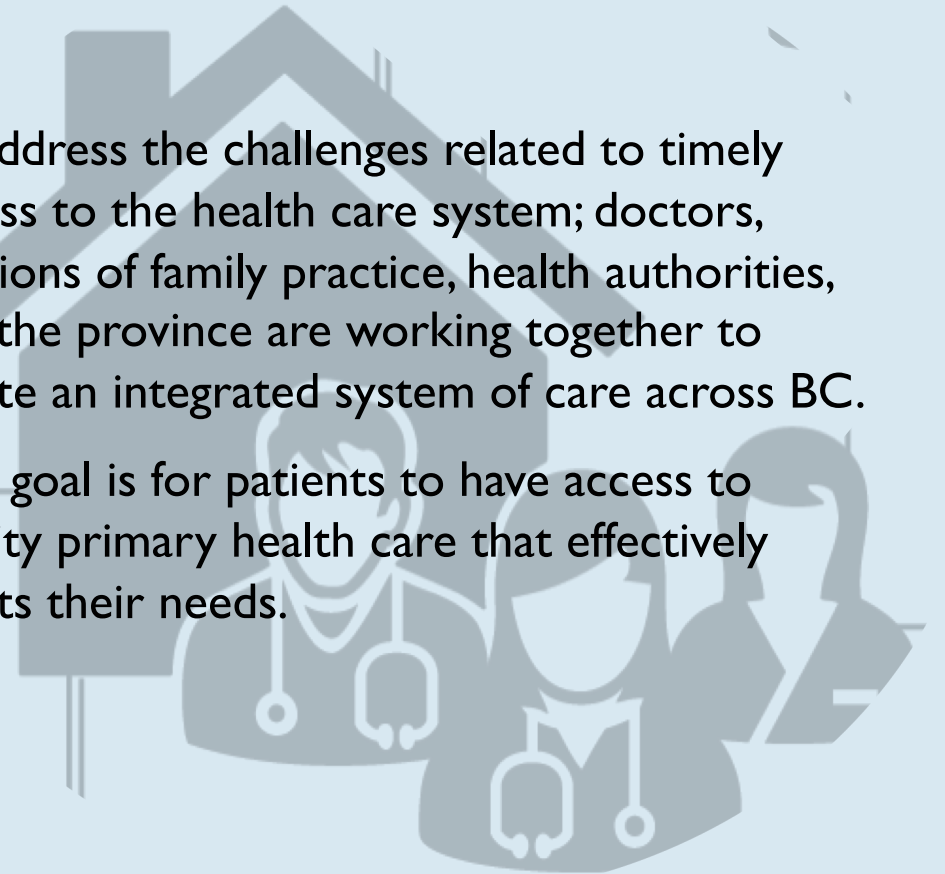
PRIMARY CARE NETWORK

What is the PCN?

BACKGROUND

To address the challenges related to timely access to the health care system; doctors, divisions of family practice, health authorities, and the province are working together to create an integrated system of care across BC.

The goal is for patients to have access to quality primary health care that effectively meets their needs.



PRIMARY CARE NETWORK

What is the
Integrated system
of care?

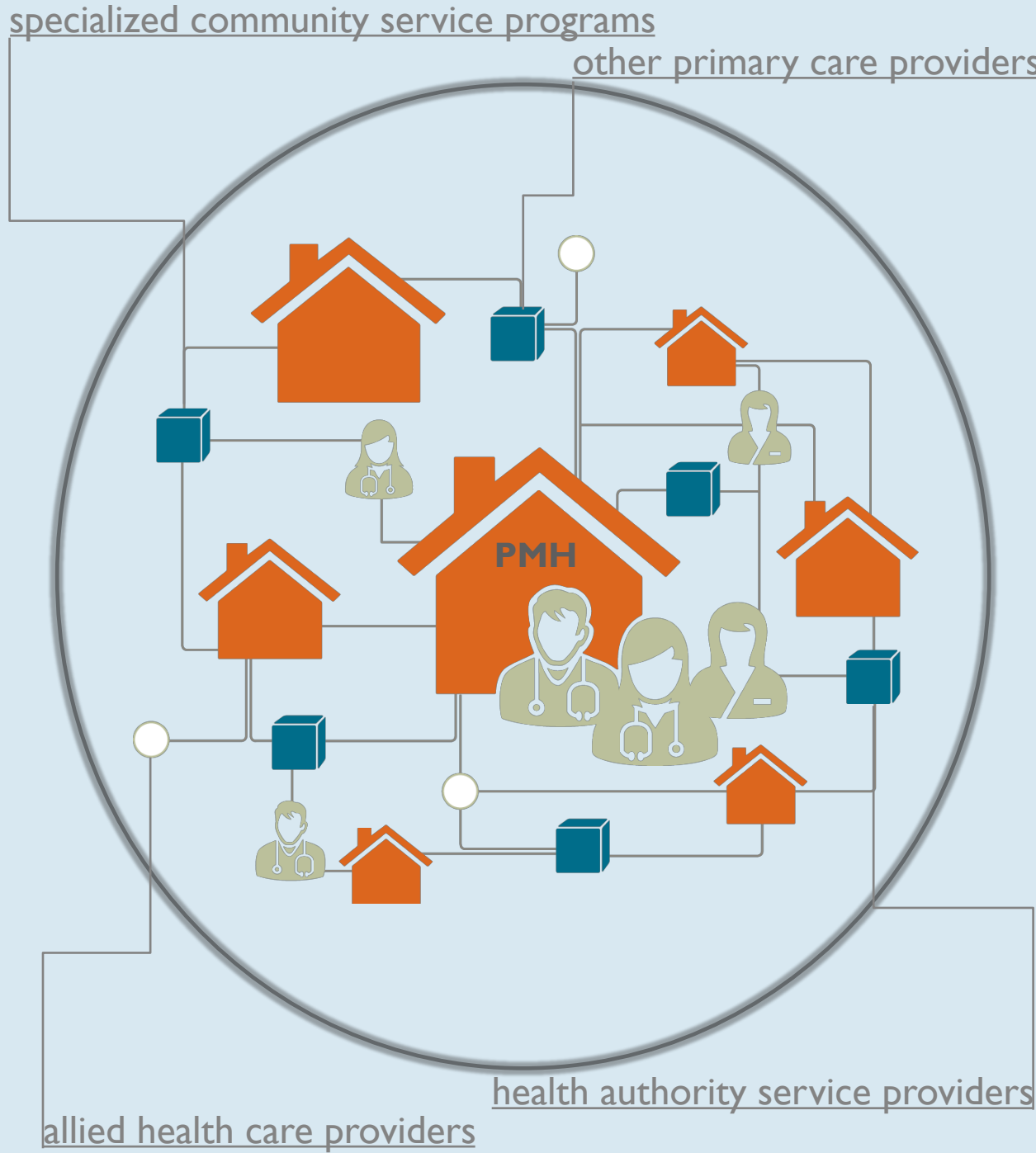
This integrated system includes the Patient Medical Home (PMH) and the Primary Care Network (PCN).

The Patient Medical Home is a team-based family practice where patients get the majority of their care and their primary care providers focus on diagnoses, patient relationships, and longitudinal care.

The Primary Care Network is a clinical network of physicians and other providers in a geographic area who work together in new ways to expand team-based supports for General Practitioners and patients.

PRIMARY CARE NETWORK

PMH & PCN



PRIMARY CARE NETWORK

Who governs the PCN?

Members of the New Westminster and Tri-Cities Primary Care Network(PCN) Steering committee meet regularly to create partnerships and identify opportunities to improve how community members can access health care in their community. The three major partners of this committee include Fraser Health, Kwikwetlem First Nations, and the Fraser Northwest Division of Family Practice.



PRIMARY CARE NETWORK

Major Components of Funding

RNiP, (Registered Nurse in Practice)

A Registered Nurse is positioned in a family practice, to help with the patient flow.

MHSU SHARE, (Mental Health Substance Use)

Short-Term Mental Health Supports for patients, until they can access long-term supports.

NP & GP, (Nurse Practitioner & General Practitioner)

Defined.

Attachment Hub

One-on-one support to get patients attached to a family doctor.

Pathways

Patient and Physician Resources within the community.

KFN supports (Kwikwetlem First Nations)

Supports for First Nations People in the KFN to get access to medical services.