

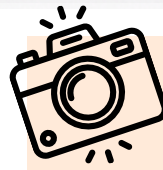
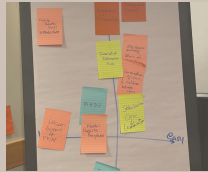
THE OCEANSIDE PCN CHECK UP

February 2025

Issue 1 Volume 1



Thank you to everyone who took the time to attend our Strategic Planning Session. Your valuable insights and contributions helped shape meaningful discussions, and we're excited about the direction we're heading. Together, we're building a strong foundation for our future success!



Attachment *SNAPSHOT*

Attachment Counts

Reporting Period:

January 8th, 2025



Account	Active	Attached
4251 Parksville	3,651	1,949
4252 Oceanside	2,227	1,411
4253 Oceanside Rural	4,035	2,067
Total	9,913	5,427

WELCOME

Please join us in welcoming **David Bailey**, our new Island Health Manager for the PCN. We're thrilled to have him on board and look forward to the positive impact he will make in supporting our team and advancing our goals.

Please join us in welcoming **Tess Walton**, the new Regional Director for Island Primary Care Planning & Implementation Oversight from the Ministry of Health. We're excited to have her on board and look forward to the positive contributions she will bring to our team in advancing our goals.



Who Can Refer to BounceBack® Coaching?

Primary Referrals

These professionals can refer participants directly:

- Physicians, Nurse Practitioners, Psychiatrists, Psychologists
- Registered Clinical Counsellors, Registered Social Workers, School Counsellors

Secondary Referrals (Pre-approval required)

These individuals or organizations can refer by providing the contact information of a primary care provider:

- Mental Health & Addictions Services, Public Health Nurses, Home Care Nurses, Case Managers

For more details or to submit a referral, visit our website or contact us!

click here!

PCN Community Engagement Resources

Supporting Resources

[PCN Refresh](#) (from the [PCN Toolkit](#))

[Meaningful Patient Partner Engagement: A Guide for Projects and Committees](#)

[Community Healthcare System Support Playbook](#)

[Patient Voices Network](#)

[Committee Principles & Guidelines for Health Care Partners](#)

[Improving Healthcare Together Kits](#)

[Culturally-Safe-Engagement-What-Matters-to-Indigenous-First-Nations-Metis-and-Inuit-Patient-Partners](#)

[The Structure of Belonging by Peter Block](#)

MOA Corner

Connecting, Growing, and Thriving Together

Welcome to this edition of the MOA Corner! We are working on revamping the MOA Network, we're excited to bring you fresh updates, opportunities, and resources to help you connect with members, grow your career, and thrive in community. Stay tuned for new developments and enhanced experiences – watch this space!