

Update – Highlights of Victoria Division Work, June 2018

For comprehensive information, to register for events/meetings or to get involved with Division work, please contact us at victoria@divisionsbc.ca or 1-877-790-8492

Newest Developments & Highlighted Calls to Action

- The Victoria and South Island Divisions of Family Practice recently created a Resident Working Group. The working group is made up of 1st and 2nd year Residents, community GP's and Division staff. The group meets quarterly and is focussed on identifying ways Divisions can connect and support Residents in Greater Victoria. The group has regularly scheduled events including the annual Welcome Summer BBQ, a locum matching event and an annual Dine & Learn. For more information please contact Helen Welch hwelch@divisionsbc.ca.
- **Doctors Technology Office (DTO)** – On June 12th, VDFP hosted an interactive Physician Office Security Workshop. Those who did attend came away with valuable tools and insight. If you were not able to attend, check out the DTO website for [resources to manage your practice](#). DTO also has physician engagement webinars each month. If you are interested in participating or to find out more about past webinars contact dtoadmin@doctorsofbc.ca.
- **RACE** – Did you know that you're able to contact Provincial services through the South Island RACE app? To access urgent patient care advice from one of the 11 locally covered specialties plus any of our 16 Provincial services register for the South Island RACEapp by searching 'RACEapp+', ** on your phone's app store, or go to www.raceapp.ca. (**Select "South Island" region) The Vancouver RACE team has recently added a number of Provincial services including Physical Medicine & Rehabilitation, Perinatal Addictions and Perinatal Psychiatry. For a full list of our Provincial services see <http://www.raceconnect.ca/services-available/> For any questions or concerns contact the RACE team at: sirace@sidfp.com
- **GP Networks:** GPs in Victoria are beginning to coalesce into networks that can share services (including locums!), support cross-coverage, increase access to care for their patients, reduce practice costs, and more. *Join a newly-formed network or get support to start one!* Contact Helen, hwelch@divisionsbc.ca.
- **Pathways:** Use this online tool developed by GPs that provides up to date information about specialist wait times, referral processes, and contact methods. Email victoria@pathwaysbc.ca for more information or support.
- Check out the calendar to see all of the events we have in store! <https://www.divisionsbc.ca/victoria/calendar>

Recruitment, Retention and Practice Coverage

- Helen Welch is available to facilitate coverage placements for both locums and regular GPs, and to help with MOA placements. *Use our website to advertise and secure coverage.*

Care of the Elderly

- **Victoria's Residential Care Initiative (RCI) has grown:** attend the Learning Series, or contact jcizman@divisionsbc.ca to learn more about new RCI programs to increase quality of care, provide after-hours coverage, and develop innovative practice models such as TORCH and CORE (Coordination & Coverage for Residential Excellence).
Residential Care Billing Optimization: Did you know that the RCI has a residential care billing guide? This guide provides physicians with support to ensure residential care practice is financially rewarding. If you would like a copy of this guide, or would like the assistance of our billing consultant get in touch. RCI Program Team telephone: 778-265-3137 or email: VictoriaSouthIsland.RCI@divisionsbc.ca

Mental Health & Substance Use

- CBT Group Medical Visits: Patients in these groups show significant clinical improvement. *Refer your patients today!*

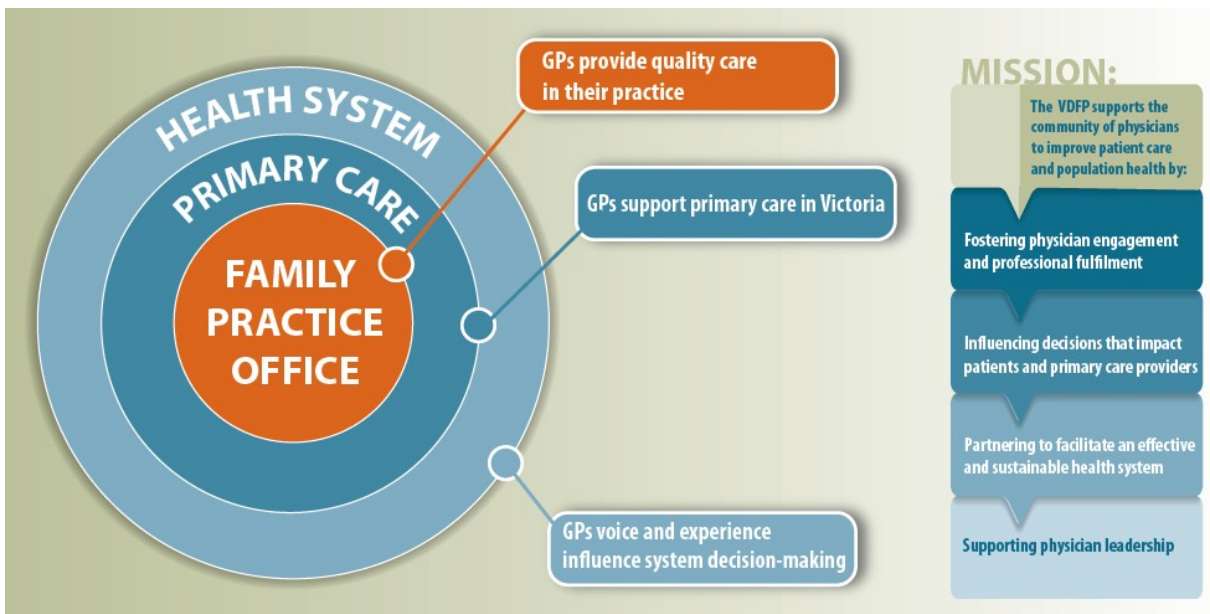
Board of Directors

- *Curious about what the Division's board does?* Board meeting minutes and monthly project reports are now available on the Division's website (log in to view), and members are encouraged to attend board meetings as guests.

Strategic Plan 2016-19



The VDFP is committed to building collaborative, respectful relationships with members, partners and stakeholders. We respond to local concerns through grassroots democratic action. Our work is driven by members' needs, which we identify through ongoing and meaningful engagement, and exploration of both practice- and research-based evidence. We strive to affect needed changes in our community and health system, and to demonstrate responsible stewardship of public resources.



Please contact us with your questions, comments and feedback! For inquiries about the strategic plan, please email the Executive Director at victoria@divisionsbc.ca.