

Statement of Operations and Changes in Net Assets

For the Year Ended March 31

	2015	2014
Revenue		
Doctors of BC – Infrastructure	\$ 434,004	\$ 386,112
Doctors of BC – Shared Care, Transitions in Care	271,317	171,701
Doctors of BC – A GP for Me	218,024	287,049
Doctors of BC – In-patient Care	193,450	216,946
Doctors of BC – Shared Care, Partners in Care	182,219	130,161
IHA – Project Funding	143,622	120,524
Doctors of BC – Chronic Pain	41,714	38,047
MBSR – Continuing Professional Development	16,547	–
Interest	–	1,131
	1,500,897	1,351,671
Expenditures		
Administration	45,213	42,155
Board members	224,060	223,308
Facilities and supplies	8,612	10,098
Management	635,984	584,796
Members and physicians	353,589	339,935
Project costs	234,475	150,248
	1,501,933	1,350,540
Excess of expenditures over revenue for the year	(1,036)	1,131
Net assets, beginning of year	5,185	4,054
Net assets, end of year	\$ 4,149	\$ 5,185

Acknowledgement

The Kootenay Boundary Division of Family Practice gratefully acknowledges the funding of the General Practice Services Committee, Shared Care Committee and Innovation Fund as well as the support of the Division of Family Practice provincial office and Shared Care central office. We extend our gratitude for the contributions of our many community partners and community representatives.

Kootenay Boundary
Division of Family Practice
PO Box 9, Nelson BC V1L 5P7
Fax: 1-866-272-9070

Photo credits:
Cover – PictureBC

The Divisions of Family Practice Initiative is sponsored by the General Practice Services Committee, a joint committee of the BC Ministry of Health and Doctors of BC.

www.kbdivision.org

ANNUAL REPORT 2014–15



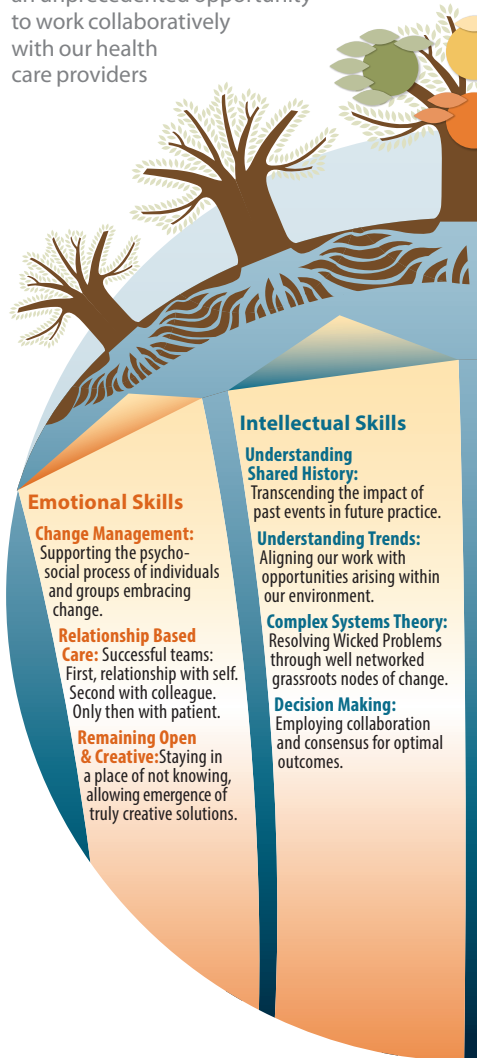
Kootenay Boundary Division

By Dr. Lee MacKay,
Dr. Martha Wilson,
Executive Director
Andrew Earnshaw

In 2014 – 15 the Kootenay Boundary Division of Family Practice has had tangible impact in 20 projects currently in progress. Our work within the provincial A GP for Me initiative began in earnest; the Rural Residency Program arrived in July; we supported clinics, communities and incoming GPs in recruiting 7 new doctors to the region; we saw Telehealth improve patient care; Child and Youth Mental Health Substance Use connect GPs, Specialists, Allied Health, patients and their communities, and much, much more.

The success in our project work reflects the strength with which Division members have embraced system transformation in alignment with leaders at the highest levels in British Columbia. In March 2015, Deputy Minister Stephen Brown published three health care policy papers outlining the new vision for our Health Care System. British Columbia will join other leading jurisdictions across the western world in implementing truly collaborative Inter-Professional Team-Based Primary Care, to address the growing challenges in chronic disease management, mental illness, the aging population, system sustainability and patient/provider experience of care.

It is our work over the coming years to breathe life into this transformation at the local level, and target it at priority issues of Kootenay Boundary practitioners, many of which are captured in the Division Tree. GPs and NPs have an unprecedented opportunity to work collaboratively with our health care providers



Leadership Report

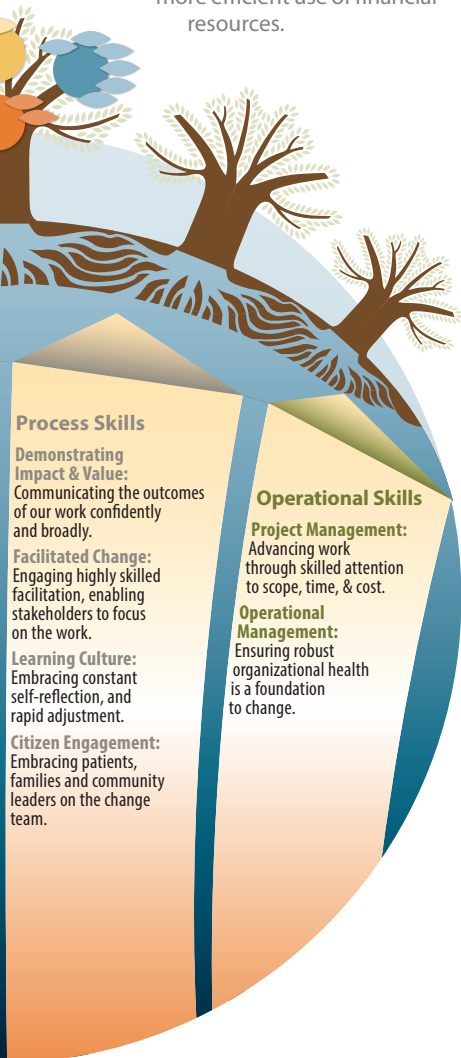
in IH and community to implement a system of team based primary care in Kootenay Boundary that consequentially addresses the triple aim of improved patient and provider experience of care, improved population health and more efficient use of financial resources.

In the coming year, we will seek external advice, as well as draw on the expertise of Practitioners in our midst already on this path, and bring this knowledge to bear on how we implement team based care to best effect in Kootenay Boundary. We will continue to build the critical skills that are foundational for grassroots, collaborative, consensus based change, as shown in the diagram you see here – emotional, intellectual, process and operational. (Think of this graphic as analog to the CanMEDS Physician Competency Framework, applied to Practitioner leadership in change management.)

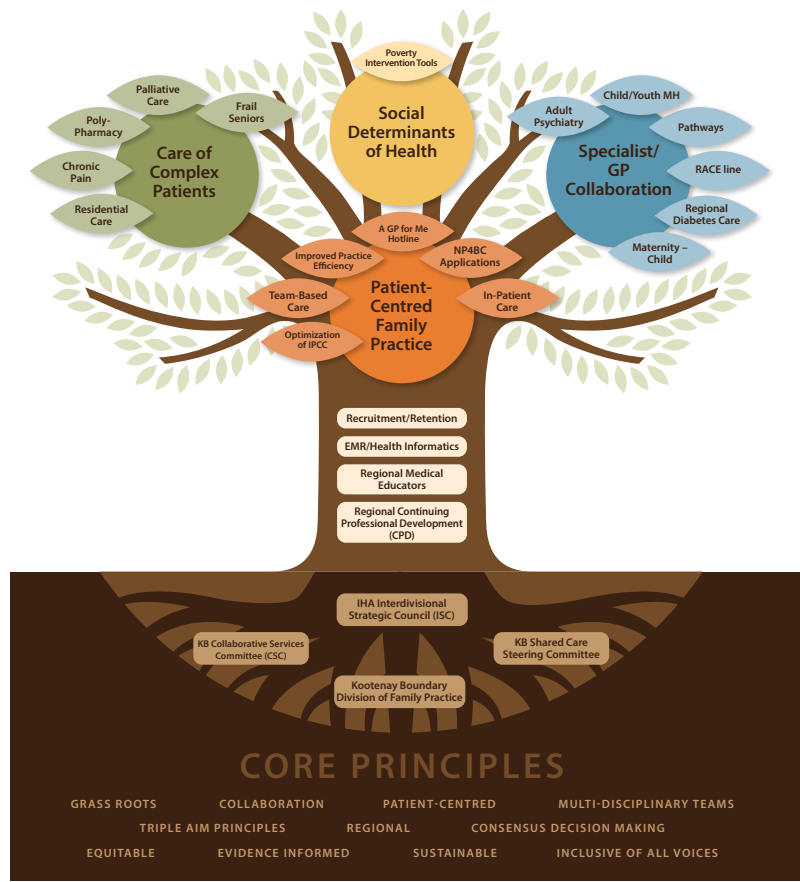
Thanks to the efforts of our Board, members and project teams since the launch of the Division four years ago, we have the organizational strength to embrace this process. Over this same time frame, our work and the work of our partners has dramatically improved relationships in all sectors of the health care system in KB, creating the foundation for real change.

The gauntlet has been thrown down. It is our opportunity to pick it up and along with our health care and community partners, lead the future of primary healthcare in Kootenay Boundary. The result will be a stronger health care system, better outcomes for patients, and richer, more satisfying careers for physicians.

Lee, Martha, Andrew



Our Impact: Kootenay Boundary Division of Family Practice Projects



Thank you to everybody engaged in Division work in 2014/15

- Adam Wylie
- Akin Iyiola
- Alex Baxter
- Amanda McDougall
- Andi Cuddington
- Andre De Greef
- Andre Kirsten
- Andrea McKenzie
- Andrea Winckers
- Andy Lawe
- Ann Godderis
- Ann Weir
- Barb Bentley
- Barb Nielsen
- Ben Eaton
- Bethany Woodrow
- Bev Harmston
- Bob Lewis
- Brandon Tuvel
- Brenda Trenholme
- Brendon Tuvel
- Brigitte McDonough
- Carrie Fitzsimmons
- Catherine Ruskin
- Chelsea Anchikowski
- Cheryl Bethune
- Cheryl Gnyp
- Cheryl Hume
- Cheryl Whittleton
- Chi Zhang
- Chuck Burkholder
- Cindy Crane
- Cindy Kozak-Campbell
- Cindy Loukras
- Cletus Okonkwo
- Corinne Knox
- Cyndey Higgins
- Cynthia Neal
- Dave Larocque
- Dave Sonnichsen
- David Merry
- David Soukeveiff
- Dawn Tomlin
- Debbie Martin
- Denis Thibodeau
- Derek Lum
- Devon Zimmer
- Devon Palmer
- Dharma McBride
- Don Nutini
- Donna Gibbons
- Doug Lacey
- Eddie Naude
- Elizabeth Lunn
- Elizabeth McCoid
- Ellen Smart
- Eric Dalla Lana
- Eric Yaeger
- Erin Love
- Eve Burkart
- Gail Lavery
- Georgia Bekiou
- Guy Fradet
- Ian Grant
- Ian Reid
- Ian Tang
- Isabelle-Anne Fontaine
- Jacquie East
- Jan Summersides
- Jane Cusden
- Janet Fisher
- Javier Gonzalez
- Jeanette Boyd
- Jen Dressler
- Jennifer Arnosti
- Jim Fisher
- Jim Noiles
- Jo-Ann Tisserand
- Joel Kalia
- John Peachell
- Jonas Sandstrom
- Josee Lesperance
- Karen Miller
- Karina Poznikoff
- Karl Hart
- Karly Olsen
- Kate Foreman
- Katherine Shearer
- Kathrine Coatta
- Kathryn Hale
- Kathy Apostolic
- Keith Bridger
- Keith Merrit
- Keith Smythe
- Kevin McKechnie
- Kim Irving
- Kris Taks
- Krista Osmond
- Kristi Kuromi
- Kyle Merritt
- Lauren Galbraith
- Lee Mackay
- Leslie Paul
- Libby McCoid
- Lilli Kerby
- Linda Krantz
- Linda Oddo
- Lindy Turner
- Lisa Demolitor
- Lisa Oliver
- Lisa Pasin
- Lisa Sawyer
- Lisa Vasil
- Lois Lien
- Loretta Zilm
- Lori Verigin
- Louise Kyle
- Louise Poole
- Maggie Haley
- Marian Berry
- Marianne Hart
- Marion Berry
- Marius Scheepers
- Martha Wilson
- Mary Bassingthwaight
- Trail, Nelson, KBRH, KLH, CHC, ALH, BDH, New Denver, Kaslo
- Megan Kennedy
- Melissa Her
- Melissa Herr
- Melissa Ringer
- Michael Brownstein
- Michel Hjelkrem
- Michelle Evans
- Michelle Sylvest
- Mike Inniss
- Mike Kent
- Mike Martin
- Mike Robinson
- Mike van Vliet
- Miles Smith
- Miriam Ramsden
- Monique Lalonde
- Nathan Dalla Lana
- Nattana
- Dixon-Warren
- Nelson Medical Clinic
- Nichole Gill
- Norm Lea
- Phillip Malpass
- Rachael Davidson
- Ralph Behrens
- RDCK, area H
- Richard Magee
- Rob Kobayashi
- Ron Cameron
- Ron Parisotto
- Rowland Phillips
- Sam Segal
- Sarah James
- Sarah Taylor
- Sarah Tucker
- Scot Mountain
- Sharman Naicker
- Sharon Campese
- Sheena Albrecht
- Shiloh Perkins
- Shiraz Moola
- Stefanie Houde
- Stephen Reichert
- Sue Babensee
- Sue Benzer
- Suzanne Lee
- Tanya Momtazian
- Tara Gill
- Teresa Winter
- Terry Van Horn
- Thalia Vesterback
- Todd Kettner
- Tracy Clemans-Gibbon
- Trevor Aiken
- Trevor Janz
- Trish Hallstrom
- Trish Thomson
- Trudi Toews
- Tyler Exner
- UBC RCPD Staff
- Village of Slocan
- Wendy Rayner
- Win Mott
- Zak Matieschyn

NP4BC Applications

- 2nd successful applicant (NP Donna Gibbons) begins work in New Denver/Slocan
- A number of Division members independently and successfully exploring new team based approaches in clinic — employing NPs and other allied health practitioners to improve efficiencies and offer multiple 'in-clinic' care options to patients

Chronic Pain

- Chronic pain tool and database launched in late 2014 and further developed through 2015
- Tool now includes over 80 resources to help patients and doctors and is available at kbdivisions.org or the community resource site kb.fetchbc.ca

Poly-Pharmacy

Residential Care

- GPSC residential care incentive to help address downward trend in the number of physicians providing services to seniors in residential care
- Division to receive funding to develop and implement local solutions to improve care of patients in residential care services
- Division ED sat on provincial steering committee and championed integration of robust medication review into the standards for incentive payments

Palliative Care

- Palliative care education workshop held with Columbia Basin Trust and the Kaslo and Kalein Hospices
- New IH/Division partnership creating local palliative care CPD sessions to bring leading practice standards in team based palliative care to KB

Frail Seniors

- IH hosted cross community workshop in late 2014. GPs and the 4 IH portfolios agreed to focus on system reform of discharge planning for frail seniors from KBRH
- New working group formed and will meet in fall 2015 to develop goals and priorities for 2016

Poverty Intervention Tools

- Tool launch followed by rounds at KLH in early 2015 with KBRH planned for the Fall
- Rounds included presentations from community groups outlining services offered to community members challenged by SDH issues
- Partnership with Pacific Blue Cross to further SDH agenda being discussed at province wide meeting set for Fall 2015

Adult Psychiatry

- Team skills enhanced for 270 participants through Responsive Behaviours in Seniors rounds through late 2014 to date. Sessions continue through 2015/16 and model being adopted across IH
- Monthly collaborative care sessions between psychiatrists and family physicians now take place in Kaslo, Nelson, Salmo and the Boundary
- Specialized child and youth collaborative care session piloted

Child/Youth MH

- First local web resource for families and practitioners launched — www.kootenayfamilyplace.org/kbsearchlight
- 27 GPs completed CYMH PSP model, critical reviews of wait lists and tests of change and complex cases at the committee level results in improved collaborative approaches, increased support for patient/family and stronger provider relationships
- 2015/16 goals: pilot a program to increase understanding of and explore solutions for barriers to wrap around care; work on local/regional protocols to support children/youth who have been victims of sexual abuse or violence and continue engagement of all stakeholders through the multi-sectoral 'Kindness Creates Wellness' community speaker series

Pathways

- Pathways launched June 2015
- Administrator hired and all KB specialists have provided detailed information and referral requirements
- Website includes access to Lower Mainland specialists with Kelowna coming soon
- Hundreds of clinical resources available, as well as links to community health contacts/information website: kb.fetchbc.ca

RACE line

- RACE line launches July 2014
- Monthly calls from over 11 clinics prevent ER admissions, unnecessary referrals and help confirm care management plans/medications
- RACE expanding in 2015 with more specialities and instant access through a new smartphone App

Regional Diabetes Care

- Multidisciplinary Diabetes conference Jan 2015 with over 80 attendees including GPs, specialists, pharmacists, nurses, dieticians and IH staff championing team-based care approach
- Discussion paper regarding physician involvement in sustainable diabetes care co-authored
- 7 future initiatives identified for consideration in next phase of Division Diabetes work

Regional Continuing Professional Development (CPD)

- Strong connections made to HA, Province and over 100 events delivered
- Mindfulness based stress reduction, Kootenay Medical Conference, Regional Antibiotic Overprescribing tour
- Selkirk Rural Pre-Med, Trail ICC and Rural Residency programs provide strong foundation for future vision: creating a regional campus of inter-professional learning across all stages of medical education, including practicing GPs

Regional Medical Educators

- KB chosen as one of eight rural sites for UBC Family Medicine Residency Training
- Region-wide support has resulted in a strong syllabus for the program, first four residents arrived July 2015
- Selkirk Rural Pre-Med program enters 2nd year and ICC program in its third year

EMR/Health Informatics

- Objective data dashboard results presented at eHealth 2014 conference
- KB working with physician data collaborative to bring polypharmacy pilot application of EMR data aggregator to an Osler clinic in 2015/16
- Another EMR data quality initiative through small group learning sessions is in the works

Recruitment/Retention

- New marketing materials launched in spring 2015 with updated kbdoctors.ca website
- RECC conference successfully builds list of 40 doctors interested in the region
- KB Division working with Lower Columbia Community Development Society to build welcome program and using it as the basis for other KB community programs
- Nine new doctors recruited to KB, Division actively supporting clinics, communities and arriving recruited physicians as well as retiring GPs with succession planning

A GP for Me

- KB A GP for Me proposal presented and \$650,000 awarded for implementation
- Five strategies implemented: Recruitment and retention, Improved practice efficiency, IPCC optimization, Team-based care pilot (social worker in practice), A GP for Me Hotline to support unattached patients

Optimization of IPCC

- 6 clinics supported in 2015
- Division team has supported streamlining chronic disease management, improving patient selection, flow and recalling
- PITO practice automation coach recruited to assist GP's and MOA's track and improve work flow via their EMR

Team-Based Care

- Nelson Medical Associates piloting viability of integrating social worker in practice
- To date, referral patterns and billings project towards a fully sustainable model with program continuing through March 2016
- "The benefits to patients and to us as providers is unquestionable." — Dr. MacKay

A GP for Me Hotline

- Hotline launched April 13, 2015 focusing on referrals from hospital and primary health centre emergency departments and mental health services
- 101 calls received in first 10 weeks
- Minimum 54 patients attached
- High priority attachments facilitated

View the full report at kbdivision.org/report2015