

# Annual Report 2017–2018

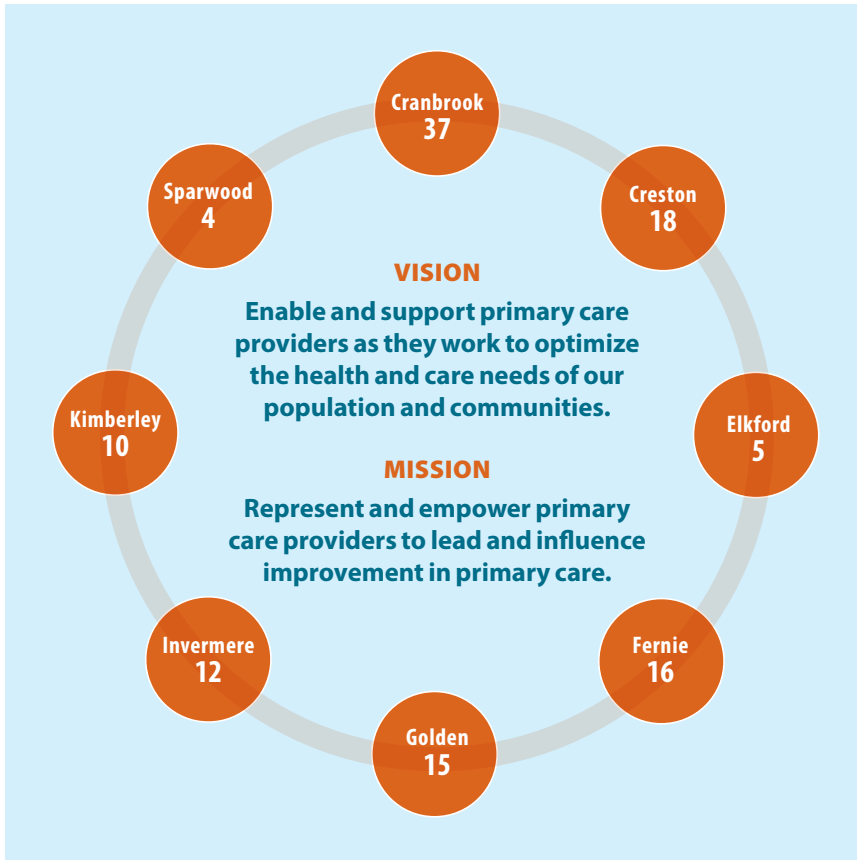


We are **117** Members strong across **8** Communities



**East Kootenay**  
**Division of Family Practice**  
A GPSC initiative

# Vision and Mission



# Contents

Vision and Mission.....	2
A Year in Review.....	4
Board of Directors.....	5
Patient Medical Home .....	6
Collaborative Services Committee .....	6
Social Work Partnership and Expansion .....	7
EASE (Electronic Access to Specialist Expertise).....	7
Recruitment and Retention .....	8
Creston Youth Hub .....	8
Child and Youth Mental Health and Substance Use in East Kootenay .....	9
Shared Care Maternity.....	10
Healthy Kimberley.....	10
Annual Financial Report.....	11
Contact.....	12

# A Year in Review

We are completing another successful year at the division, and we continue to adapt to the changing landscape of health care in BC. Our board revised the vision and mission of the organization to better reflect our unique role in health care improvement efforts across the region and the province. The focus of the EK Division's priorities continue to be grassroots and community-focused, while being informed by the provincial priorities of the Ministry of Health and Doctors of BC.

Megan Purcell, our Executive Director, was on maternity leave from July 2017 to April 2018, and Russell Workun stepped in as the Interim Executive Director. Russell has stayed on staff to support the transition of our new 2018/19 board of directors, in addition to other work related to patient medical homes.

We welcomed new staff and contractors to the division this past year, including:

- Jacqui van Zyl, Physician Engagement Lead
- Lisa Feist, Communications Coordinator
- Kerry Stanley, Administrative Assistant
- Dionne Kowalchuk, HR Coordinator
- Shannon Girling-Hebert, Shared Care Lead

Some existing staff members have shifted roles over the past year. Tina Hochart is now the Recruitment and Retention Coordinator, in addition to her role as Executive Assistant. Nancy Rainey now works as Project Coordinator for the Maternity Project and continues to support CYMHSU.

This year, Mike Walsh continued as the Chair, Todd Loewen as the Physician Lead, Jessica



Chiles as Vice-chair, and Gareth Mannheimer as Secretary/Treasurer. Sue Hopkins and Kimberley Barden were Members at Large.

We are proud of the work that has been accomplished over the past year. Highlights from 2017–18 are as follows :

- Completed change management training for Board and staff
- Completed/Initiated Primary Care Telephone Interpreting Service Pilot with Ministry of Health
- Supported CME opportunities with the Best Evidence Conference in Kimberley
- Completed physician engagements in each community
- Expanded primary care social work through partnership with the Ktunaxa Nation Council



- Supported the development of the Opioid Agonist Clinic in Invermere
- Continued to support CYMHSU legacy in many communities
- Received GPSC Innovation funds for Healthy Kimberley and Youth Services Hub in Creston
- Completed Shared Care Maternity project in Elk Valley
- Expanded the Collaborative Services Committee to include the Ktunaxa Nation and a Patient Voices representative.

We would like to sincerely thank all the directors, executive, and support staff for their diligent and passionate work.

Dr. Michael J. Walsh, Dr. Todd Loewen, and Megan Purcell

## Board of Directors

Dr. Michael J. Walsh – Chair

Dr. Jessica Chiles – Vice-chair

Dr. Gareth Mannheimer – Treasurer & Secretary

Dr. Todd Loewen – Physician Lead

Dr. Kimberley Barden – Member at large

Dr. Suzanne Hopkins – Member at large

# Patient Medical Home

Jacqui van Zyl

The East Kootenay Division of Family Practice held engagement sessions in each of our communities of practice between November 2017 and January 2018.

The sessions provided opportunities for family physicians to talk about their experiences in health care, identify gaps, and discuss solutions, as well as complete the Patient Medical Home Assessment.

The assessment questions helped to highlight areas where rural family practice easily embraces the principles of the PMH. We looked for solutions that aligned with the strategic priorities of our health authority and the Ministry of Health. The focus was on achievable goals and physician engagement.

The projects that have since developed were in areas of common interest across our communities, or with potential for spread. These projects included:

- Enhancing the Healthy Kimberly initiative
- Supporting the Youth Services Hub (school-based youth clinic) in Creston
- Supporting the Shared Care Chronic Pain Project in the Elk Valley
- Supporting the Shared Care Palliative Care project in Cranbrook
- Facilitating the future envisioning of primary health care in Kimberley, Fernie, and Golden
- Expanding the social work program

# Collaborative Services Committee

Megan Purcell

The CSC, where we have traditionally partnered with Interior Health, has grown to include a Patient Voices representative, as well as a representative of the Ktunaxa Nation.

The continuation and expansion of team based care through the primary care social work program was a significant focus for the CSC. The partners worked together to access early funding from the Ministry of Health to continue the program, and then partnered with the Ktunaxa Nation to develop a sustainability plan.

The CSC has also addressed challenges to collaboration that arose throughout the year, including the Maternity Nurse in Practice process.

The work of the CSC over the past year has paved the way for future work developing primary care networks across the East Kootenay region.

## EAST KOOTENAY STATISTICS

- 8 communities over 300 km
- 7 engagement events
- 60 surveys

## Social Work Partnership and Expansion

Megan Purcell

The division has worked closely with our partners at the Ktunaxa Nation to expand the primary care social work role throughout the region. The division and the Ktunaxa Nation have pooled their funding from the Ministry of Health and the Jordan's Principle funds through First Nations Health Authority to create five social work positions. The social workers receive referrals from GPs, as well as NPs and RNs working for the Nation.

The five social workers are:

- Lois Elia, serving Fernie/Tobacco Plains/Elk Valley
- Tara Ross, serving Cranbook/Kimberley/Aq'am
- Raina Messinger, serving Creston/Yaqan Nukiy
- Laura Kanik, serving Golden
- Hiring process underway for Akisq'nuk/Invermere

The social workers are permanently employed through the Ktunaxa Nation (pending annual funding renewal) and continue to work in physician's offices, as well as the Band health centres.

## Ease (Electronic Access to Specialist Expertise)

Jacqui van Zyl

ELECTRONIC ACCESS TO SPECIALIST EXPERTISE (EASE) is a secure messaging application that helps improve communication between family physicians, specialists, and health care teams. MBMD supports communication in consultations by sharing data, instructions, photos, patient information, call schedules, and more. The East Kootenay Division of Family Practice together with Shared Care has begun hosting training sessions on MBMD in our communities.



# Recruitment and Retention

Tina Hochart

A special thank you to the Regional District of East Kootenay for continuing to be our funding partner in the Recruitment and Retention program. Over the past year, the EK Division hosted five visiting physicians and supported the recruitment of three physicians to our communities. Ongoing retirements and re-locations have resulted in eight vacancies as of September 15, 2018 in the East Kootenay.

Through collaboration with the Kootenay Boundary Division we have started a database to assist clinics in finding locums for their communities.

The Ministry of Health is looking at an alternative payment plan to help attract new graduates to communities, as they are currently more interested in locum and hospital work.

# Creston Youth Hub

Nancy Rainey

The Creston Youth Hub opened the student clinic on February 15, 2018 at the Prince Charles Secondary School. The Hub operates two mornings per week during the school term, and is staffed by two family physicians, a public health nurse, two clinical counsellors, two school counsellors, and three outreach workers.

It has been a successful collaboration between the Ministries of Health and Education, Valley Community Services, EK Division, and the local business community in Creston.

The first semester of the Youth Hub was well received by both students and staff, and all involved believe this is a sustainable, spreadable model that is the future of youth wellness.

## CRESTON YOUTH HUB STATISTICS

- 31** clinical sessions
- 240** student appointments
- 60** contacts made by outreach workers
- 12** referrals to additional services





# Child and Youth Mental Health and Substance Use in East Kootenay

Nancy Rainey

The EK Division, recognizing the positive work of the three local action teams in Creston, Golden, and Kimberley/Cranbrook, decided to continue funding for administrative support past the end of the provincial initiative on December 31, 2017.

The Golden team has continued to work on a large project to create a community website to provide information about children and youth mental health/substance use services, called [www.iamnotfine.ca](http://www.iamnotfine.ca). The website also provides links to regional and provincial resources. In addition to the website, posters were developed for local community partners, and the team has partnered with the Town of Golden to mount posters in waterproof frames around town at strategic locations. There are also business cards for health providers to give to youth that have important numbers and the website address.

The division also brought the collaborative model to Invermere and the Elk Valley. Both teams were initiated in January 2018 and are working to develop a service map of all the CYMHSU services in their respective communities. Relationships between physicians, CYMH and SU clinicians, social workers, RCMP, schools, and community partners have been strengthened, and the teams are enthusiastic to work together to improve access to MH/SU services for children and youth in their communities.

**I'm NOT Fine**

Any door is the right door to find  
**HELP, SAFETY, and UNDERSTANDING.**

Information about services in Golden  
for children and youth available at: [www.iamnotfine.ca](http://www.iamnotfine.ca)

**Need someone to listen right now?**  
**1-888-353-CARE (2273)**  
East Kootenay Crisis Line

An initiative of Shared Care funded by the Ministry of Education and Doctors of BC

SharedCare Partners for Patients RBC BRITISH COLUMBIA doctors of bc

## Shared Care Maternity

Shannon Girling-Hebert

The goal of the Shared Care Maternity program is to improve outcomes and experiences for mothers and infants. Elk Valley maternity services for low-risk patients have been sustained and improved through the provision of maternity services close to home, supported by an integrated team of health professionals.

The project resulted in full engagement in the maternity conversation with Interior Health. Managers became actively involved working toward solutions to operating room closures and building maternity nursing capacity, including recruitment of physicians and skilled OR and maternity Nurses. Together, the physicians and IHA, developed a “Nurse In Practice” model to include mentorship opportunities to increase RN capacity in maternity care, and to provide outreach to physician offices. Physicians, nurses, managers, Bellies to Babies, Public Health and obstetrical representatives are participating in a Maternity Collaborative initiative (Rounds). The project resulted in a collaborative and integrated system of practice between physicians’ clinics, Elk Valley Hospital, and allied health professionals.



## Healthy Kimberley

Dr. Ilona Hale

Healthy Kimberley is a community health promotion initiative which originated during A GP for Me in 2013. Healthy Kimberley, now a registered charitable society, continues to grow and expand its reach and impact in the community by building things like outdoor playboxes and a new high school basketball court, hosting physical literacy workshops, and starting an indoor walking track program. Most recently, the initiative has been involved in the food recovery depot, where healthy food from a local grocery store that would otherwise have been wasted (especially produce, dairy, and eggs) is redistributed to those in need through a \$95,000 Columbia Basin Trust grant. This partnership is an example of our new business engagement strategy, called Taking Care of Business, supported by a GPSC Innovation Grant through the EK Division.

We are also conducting research on obesity prevention during infancy through the Parents Perceptions of Obesity Prevention in Infancy project and the Raising Infants to be Healthy Eaters (RAISE) pilot, and on the characteristics distinguishing “healthy outlier” rural communities with our Healthy Kimberley 2020 project.



# Annual Financial Report

## Patti Phillips

April 1, 2017 – March 31, 2018

Funding Carried Forward	\$ 189,606.00
New Funding	1,523,816.00
<b>Total</b>	<b>\$ 1,713,422.00</b>

### Expenses

Physician Sessional	\$ 695,594.00
Employee and Contractor Costs	725,046.00
Travel	54,954.00
Facilities and Operations	47,707.00
Meeting Costs	51,200.00
<b>Total Expenses</b>	<b>\$ 1,574,501.00</b>

**Unused Funds from 2017–2018 138,921.00**

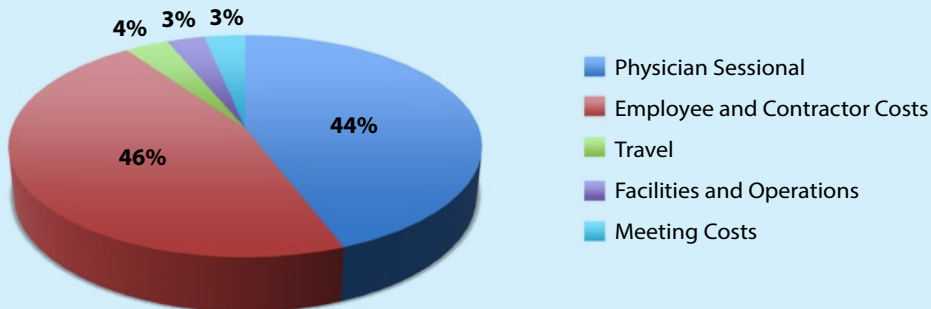
**Total Expenses and Unused Funds \$ 1,713,422.00**

Less Repayment to Funders (138,921.00)

**Unused Funds Forward 2018–2019 \$ 127,490.00**

*\*Note: Audited financials have been sent to all members. Should you wish to see a copy, please contact Patti Phillips, Operations Lead at [pPhillips@divisionsbc.ca](mailto:pPhillips@divisionsbc.ca)*

### EK DIVISION EXPENSES SUMMARY 2017–2018





### **East Kootenay Division of Family Practice**

Office: Suite 200–201 14th Ave., N.

Mail: P.O. Box 742, Cranbrook, BC V1C 4J5

Phone: 250-426-4890

Fax: 250-417-4664

Email: [mpurcell@divisionsbc.ca](mailto:mpurcell@divisionsbc.ca)

Photo credits: East Kootenay Division of Family Practice,  
Adobe Stock

The Divisions of Family Practice Initiative is sponsored by  
the General Practice Services Committee, a joint committee  
of the BC Ministry of Health and Doctors of BC.

[www.divisionsbc.ca/east-kootenay](http://www.divisionsbc.ca/east-kootenay)